

## Active Recombinant Human CPA2 protein, His-tagged

Cat. No. CPA2-3174H Lot. No. (See product label)

### SPECIFICATION

<b>Product Overview</b>	Active Recombinant Human CPA2 protein(NP_001859.1) (Met 1-Tyr 417) was expressed in HEK293 with a C-terminal polyhistidine tag.
<b>Species</b>	Human
<b>Source</b>	HEK293
<b>ProteinLength</b>	1-417 aa
<b>Form</b>	Lyophilized from sterile 25mM Tris, 0.15mM NaCl, pH 7.4.
<b>Bio-activity</b>	Measured by its ability to cleave a colorimetric peptide substrate, N-acetyl-Phe-Thiaphe-OH, in the presence of 5,5'Dithio-bis (2-nitrobenzoic acid) (DTNB), as measured using the wavelength at 405 nm and the extinction coefficient of 13,260 M <sup>-1</sup> cm <sup>-1</sup> . The specific activity is >4,000 pmoles/min/μg.
<b>Molecular Mass</b>	The secreted recombinant human CPA2 existing as the proform consists of 412 amino acids and has a predicted molecular mass of 46 kDa also as estimated by SDS-PAGE under reducing conditions.
<b>Endotoxin</b>	< 1.0 EU per μg protein as determined by the LAL method.
<b>Purity</b>	> 90 % as determined by SDS-PAGE
<b>Storage</b>	Store it under sterile conditions at -20°C to -80°C upon receiving. Recommend to

 Tel: 1-631-559-9269 1-516-512-3133

 Email: [info@creative-biomart.com](mailto:info@creative-biomart.com)  Fax: 1-631-938-8127

 45-1 Ramsey Road, Shirley, NY 11967, USA

aliquot the protein into smaller quantities for optimal storage. Avoid repeated freeze-thaw cycles.

**Reconstitution**

It is recommended that sterile water be added to the vial to prepare a stock solution of 0.2 ug/ul. Centrifuge the vial at 4°C before opening to recover the entire contents.

**GENE INFORMATION**

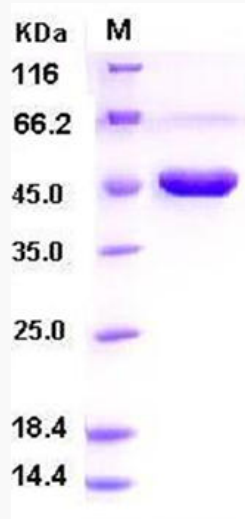
<b>Gene Name</b>	CPA2 carboxypeptidase A2 (pancreatic) [ Homo sapiens ]
<b>Official Symbol</b>	CPA2
<b>Synonyms</b>	CPA2; carboxypeptidase A2 (pancreatic); carboxypeptidase A2;
<b>Gene ID</b>	1358
<b>mRNA Refseq</b>	NM_001869
<b>Protein Refseq</b>	NP_001860
<b>MIM</b>	600688
<b>UniProt ID</b>	P48052

 Tel: 1-631-559-9269 1-516-512-3133

 Email: [info@creative-biomart.com](mailto:info@creative-biomart.com)  Fax: 1-631-938-8127

 45-1 Ramsey Road, Shirley, NY 11967, USA

**SDS-PAGE**



 Tel: 1-631-559-9269 1-516-512-3133

 Email: [info@creative-biomart.com](mailto:info@creative-biomart.com)  Fax: 1-631-938-8127

 45-1 Ramsey Road, Shirley, NY 11967, USA