

# Recombinant Human CPA2 Protein, Myc/DDK-tagged, C13 and N15-labeled

**Cat. No.** CPA2-3553H    **Lot. No.** (See product label)

## SPECIFICATION

### Product Overview

CPA2 MS Standard C13 and N15-labeled recombinant protein (NP\_001860) with a C-terminal MYC/DDK tag, was expressed in HEK293 cells.

### Species

Human

### Source

HEK293

### Description

Three different forms of human pancreatic procarboxypeptidase A have been isolated. The encoded protein represents the A2 form, which is a monomeric protein with different biochemical properties from the A1 and A3 forms. The A2 form of pancreatic procarboxypeptidase acts on aromatic C-terminal residues and is a secreted protein.

### Molecular Mass

46.8 kDa

### AA Sequence

MRLILFFGALFGHIYCLETfVGDQVLEIVPSNEEQIKNLLQLEAQEHLQLDFWKSPTTP  
 GETAHVRVPFVNVQAVKVFLGSQGIAYSIMIEDVQVLLDKENEEMLFNRRRERSGNF  
 NFGAYHTLEEISQEMDNLVAEHPGLVSKVNIGSSFENRPMNVLKFSTGGDKPAIWL  
 AGIHAREWVTQATALWTANKIVSDYGKDPSITSILDALDIFLLPVTNPDGYVFSQTKN  
 RMWRKTRSKVSGSLCVGVDPNRNWDAGFGGPGASSNPCSDSYHGPSANSEVEV  
 KSIVDFIKSHGKVKAFITLHSYSQLLMFPYGYKCTKLDDFDELSEVAQKAAQSLRSLH  
 GTKYKVGPICSVIYQASGGSIDWSYDYGIKYSFAFELRDTGRYGFLLPARQILPTAEE  
 TWLGLKAIMEHVRDHPYTRTRPLEQKLISEEDLAANDILDYKDDDDKV

 Tel: 1-631-559-9269    1-516-512-3133

 Email: [info@creative-biomart.com](mailto:info@creative-biomart.com)     Fax: 1-631-938-8127

 45-1 Ramsey Road, Shirley, NY 11967, USA

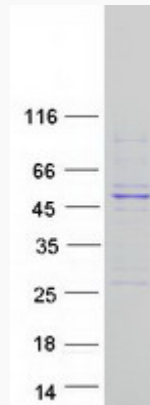


<b>Purity</b>	> 80% as determined by SDS-PAGE and Coomassie blue staining
<b>Stability</b>	Stable for 3 months from receipt of products under proper storage and handling conditions.
<b>Storage</b>	Store at -80 centigrade. Avoid repeated freeze-thaw cycles.
<b>Concentration</b>	50 µg/mL as determined by BCA
<b>Storage Buffer</b>	100 mM glycine, 25 mM Tris-HCl, pH 7.3.

## GENE INFORMATION

<b>Gene Name</b>	CPA2 carboxypeptidase A2 [ Homo sapiens (human) ]
<b>Official Symbol</b>	CPA2
<b>Synonyms</b>	CPA2; carboxypeptidase A2 (pancreatic); carboxypeptidase A2;
<b>Gene ID</b>	1358
<b>mRNA Refseq</b>	NM_001869
<b>Protein Refseq</b>	NP_001860
<b>MIM</b>	600688
<b>UniProt ID</b>	P48052

**SDS-PAGE**



 Tel: 1-631-559-9269 1-516-512-3133

 Email: [info@creative-biomart.com](mailto:info@creative-biomart.com)  Fax: 1-631-938-8127

 45-1 Ramsey Road, Shirley, NY 11967, USA