

Recombinant Human CPA3 Protein (110-417 aa), His-tagged

Cat. No. CPA3-1368H **Lot. No.** (See product label)

SPECIFICATION

Product Overview	Recombinant Human CPA3 Protein (110-417 aa) is produced by Yeast expression system. This protein is fused with a 6xHis tag at the N-terminal. Research Area: Cell Biology. Protein Description: Full Length of Mature Protein.
Species	Human
Source	Yeast
ProteinLength	110-417 aa
Form	Tris-based buffer,50% glycerol
Molecular Mass	38.0 kDa
AA Sequence	IPGRHSYAKYNNWEKIVAWTEKMMDKYPEMVSRIKIGSTVEDNPLYVLKIGEKNERR KAIFTDCGIHAREWVSPAFCQWFVYQATKTYGRNKIMTKLLDRMNFYILPVFNVDGYI WSWTKNRMWRKNRSKNQNSKIGTDLNRNFNASWNSIPNTNDPCADNYRGSAP SEKETKAVTNFIRSHLNEIKVYITFHSYSQMLLFPYGYTSKLPPNHEDLAKVAKIGTDV LSTRYETRYIYGPIESTIYPISGSSLDWAYDLGIKHTFAFELRDKGKFGFLLPESRIKPT CRETMLAVKFIKYILKHTS
Purity	> 90% as determined by SDS-PAGE.
Notes	Repeated freezing and thawing is not recommended. Store working aliquots at 4 centigrade for up to one week.

 Tel: 1-631-559-9269 1-516-512-3133

 Email: info@creative-biomart.com  Fax: 1-631-938-8127

 45-1 Ramsey Road, Shirley, NY 11967, USA



Storage

The shelf life is related to many factors, storage state, buffer ingredients, storage temperature and the stability of the protein itself. Generally, the shelf life of liquid form is 6 months at -20 centigrade/-80 centigrade. The shelf life of lyophilized form is 12 months at -20 centigrade/-80 centigrade.

Concentration

A hardcopy of COA with reconstitution instruction is sent along with the products. Please refer to it for detailed information.

GENE INFORMATION

Gene Name

CPA3 carboxypeptidase A3 (mast cell) [Homo sapiens]

Official Symbol

CPA3

Synonyms

CPA3; MC-CPA;

Gene ID

1359

mRNA Refseq

NM_001870

Protein Refseq

NP_001861

MIM

114851

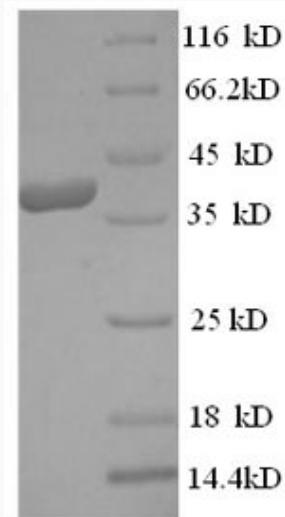
UniProt ID

P15088

 Tel: 1-631-559-9269 1-516-512-3133

 Email: info@creative-biomart.com  Fax: 1-631-938-8127

 45-1 Ramsey Road, Shirley, NY 11967, USA



(Tris-Glycine gel) Discontinuous SDS-PAGE (reduced) with 5% enrichment gel and 15% separation gel.

 Tel: 1-631-559-9269 1-516-512-3133

 Email: info@creative-biomart.com  Fax: 1-631-938-8127

 45-1 Ramsey Road, Shirley, NY 11967, USA