

Recombinant Human CPA3 Protein, GST-tagged

Cat. No. CPA3-1771H Lot. No. (See product label)

SPECIFICATION

Product Overview	Human CPA3 full-length ORF (NP_001861.1, 1 a.a. - 417 a.a.) recombinant protein with GST-tag at N-terminal.
Species	Human
Source	Wheat Germ
Description	This gene encodes a member of the carboxypeptidase A family of zinc metalloproteases. The encoded preproprotein is proteolytically processed to generate a mature protease that is released by mast cells and may be involved in the degradation of endogenous proteins and the inactivation of venom-associated peptides. Expression of this gene may be elevated in human asthma patients. [provided by RefSeq, Nov 2015]
Molecular Mass	75.1 kDa
AA Sequence	MRLILPVGLIATTLAIAPVRFDRKVFVRVKPQDEKQADIIDKDLAKTNELDWFYPGATHH VAANMMVDFRVSEKESQAIQSALDQNKMHYEILIHDLQEEIEKQFDVKEDIPGRHSY AKYNNWEKIVAWTEKMMDKYPEMVSRIKIGSTVEDNPLYVLKIGEKNERKKAIFMDC GIHAREWVSPAFCQWFVYQATKTYGRNKIMTKLLDRMNFYILPVFNVDGYIWSWTK NRMWRKNRSKNQNSKIGTDLNRNFNASWNSIPNTNDPCADNYRGSAPESKTK AVTNFIRSHLNEIKVYITFHSYSQMLLFPYGYTSKLPNHEDLAKVAKIGTDVLSTRYE TRYIYGPIESTIYPISGSSLDWAYDLGKHTFAFELRDKGKFGFLLPESRIKPTCRETML AVKFIKYILKHTS

 Tel: 1-631-559-9269 1-516-512-3133

 Email: info@creative-biomart.com  Fax: 1-631-938-8127

 45-1 Ramsey Road, Shirley, NY 11967, USA

Applications	Enzyme-linked Immunoabsorbent Assay Western Blot (Recombinant protein) Antibody Production Protein Array
Notes	Best use within three months from the date of receipt of this protein.
Storage	Store at -80 centigrade. Aliquot to avoid repeated freezing and thawing.
Storage Buffer	50 mM Tris-HCl, 10 mM reduced Glutathione, pH=8.0 in the elution buffer.
GENE INFORMATION	
Gene Name	CPA3 carboxypeptidase A3 (mast cell) [Homo sapiens]
Official Symbol	CPA3
Synonyms	CPA3; carboxypeptidase A3 (mast cell); mast cell carboxypeptidase A; tissue carboxypeptidase A; MC-CPA;
Gene ID	1359
mRNA Refseq	NM_001870
Protein Refseq	NP_001861
MIM	114851
UniProt ID	P15088

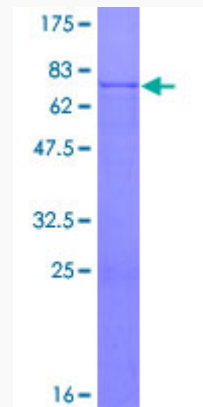
 Tel: 1-631-559-9269 1-516-512-3133

 Email: info@creative-biomart.com  Fax: 1-631-938-8127

 45-1 Ramsey Road, Shirley, NY 11967, USA

Quality Control

Testing:



12.5% SDS-PAGE Stained with Coomassie Blue.

 Tel: 1-631-559-9269 1-516-512-3133

 Email: info@creative-biomart.com  Fax: 1-631-938-8127

 45-1 Ramsey Road, Shirley, NY 11967, USA