

Recombinant Human CPA3 Protein, His/GST-tagged

Cat. No. CPA3-623H Lot. No. (See product label)

SPECIFICATION

Product Overview	Recombinant Human CPA3(Ile110~Ser417) fused with His/GST tag at N-terminal was expressed in E. coli.
Species	Human
Source	E.coli
ProteinLength	Ile110~Ser417
Description	This gene encodes a member of the carboxypeptidase A family of zinc metalloproteases. The encoded preproprotein is proteolytically processed to generate a mature protease that is released by mast cells and may be involved in the degradation of endogenous proteins and the inactivation of venom-associated peptides. Expression of this gene may be elevated in human asthma patients.
Form	PBS, pH7.4, containing 0.01% SKL, 1mM DTT, 5% Trehalose and Proclin300.
Molecular Mass	68.4kDa
Endotoxin	<1.0EU per 1ug (determined by the LAL method)
Purity	> 95%
Applications	Positive Control; Immunogen; SDS-PAGE; WB. If bio-activity of the protein is needed, please check active protein

 Tel: 1-631-559-9269 1-516-512-3133

 Email: info@creative-biomart.com  Fax: 1-631-938-8127

 45-1 Ramsey Road, Shirley, NY 11967, USA

Stability The thermal stability is described by the loss rate. The loss rate was determined by accelerated thermal degradation test, that is, incubate the protein at 37 centigrade for 48h, and no obvious degradation and precipitation were observed. The loss rate is less than 5% within the expiration date under appropriate storage condition.

Storage Avoid repeated freeze/thaw cycles. Store at 2-8 centigrade for one month. Aliquot and store at -80 centigrade for 12 months.

Reconstitution Reconstitute in PBS or others

GENE INFORMATION

Gene Name [CPA3 carboxypeptidase A3 \(mast cell\) \[Homo sapiens \]](#)

Official Symbol [CPA3](#)

Synonyms CPA3; carboxypeptidase A3 (mast cell); mast cell carboxypeptidase A; tissue carboxypeptidase A; MC-CPA;

Gene ID [1359](#)

mRNA Refseq [NM_001870](#)

Protein Refseq [NP_001861](#)

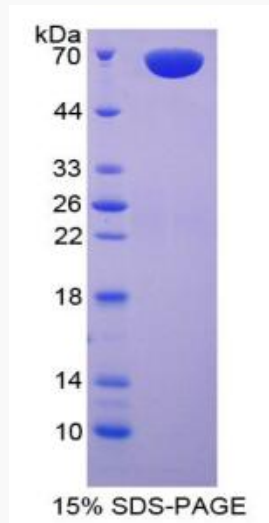
MIM [114851](#)

UniProt ID [P15088](#)

 Tel: 1-631-559-9269 1-516-512-3133

 Email: info@creative-biomart.com  Fax: 1-631-938-8127

 45-1 Ramsey Road, Shirley, NY 11967, USA



Tel: 1-631-559-9269 1-516-512-3133

Email: info@creative-biomart.com Fax: 1-631-938-8127

45-1 Ramsey Road, Shirley, NY 11967, USA