

Recombinant Human CPA4 Protein (Gly17-Tyr421), C-His tagged

Cat. No. CPA4-1056H Lot. No. (See product label)

SPECIFICATION

Product Overview	Recombinant human CPA4 (Gly17-Tyr421) fused with the C-terminal His tag was expressed in Mammalian cells.
Species	Human
Source	Mammalian Cells
ProteinLength	Gly17-Tyr421
Form	Lyophilized powder/frozen liquid
Molecular Mass	44.55 kDa
Purity	>90% as determined by SDS-PAGE.
Notes	For research use only.
Storage	Use a manual defrost freezer and avoid repeated freeze thaw cycles. Store at 2 to 8 centigrade for one week. Store at -20 to -80 centigrade for twelve months from the date of receipt.
Storage Buffer	Supplied as solution form in PBS or lyophilized from PBS.
Reconstitution	Reconstitute in sterile water for a stock solution.

 Tel: 1-631-559-9269 1-516-512-3133

 Email: info@creative-biomart.com  Fax: 1-631-938-8127

 45-1 Ramsey Road, Shirley, NY 11967, USA

Shipping

They are shipped out with dry ice/blue ice unless customers require otherwise.

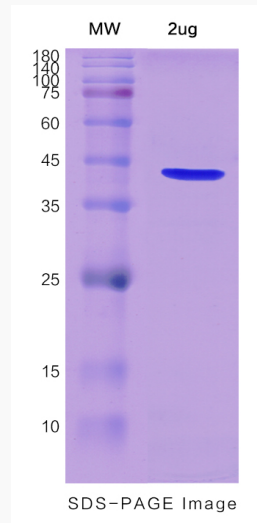
GENE INFORMATION

Gene Name	CPA4 carboxypeptidase A4 [Homo sapiens (human)]
Official Symbol	CPA4
Synonyms	CPA4; carboxypeptidase A4; carboxypeptidase A3; CPA3;
Gene ID	51200
mRNA Refseq	NM_001163446
Protein Refseq	NP_001156918
MIM	607635
UniProt ID	Q9UI42

 Tel: 1-631-559-9269 1-516-512-3133 Email: info@creative-biomart.com  Fax: 1-631-938-8127 45-1 Ramsey Road, Shirley, NY 11967, USA



SDS-PAGE



Tel: 1-631-559-9269 1-516-512-3133

Email: info@creative-biomart.com Fax: 1-631-938-8127

45-1 Ramsey Road, Shirley, NY 11967, USA