

## Recombinant Human CPA4 protein, His-tagged

**Cat. No.** CPA4-4581H    **Lot. No.** (See product label)

### SPECIFICATION

<b>Product Overview</b>	Recombinant Human CPA4 protein(Q9UI42)(114-421 aa), fused with C-terminal His tag, was expressed in E.coli.
<b>Species</b>	Human
<b>Source</b>	E.coli
<b>ProteinLength</b>	114-421 aa
<b>Form</b>	For liquid formulations, the standard storage buffer consists of a Tris or PBS based solution supplemented with 5-50% glycerol. When provided as lyophilized powder, the product undergoes freeze-drying from a Tris- or PBS-based formulation containing 6% trehalose, adjusted to pH 8.0 prior to the lyophilization process.
<b>Molecular Mass</b>	41.4 kDa
<b>AASequence</b>	SSNNFNYGAYHSLEAIYHEMDNIAADFPDLARRVKIGHSFENRPMYVLKFSTGKGVR RPAVWLNAGIHSREWISQATAIWTARKIVSDYQRDPAITSILEKMDIFLLPVANPDGYV YTQTQNRLLWRKTRSRNPGSSCIGADPNRNWNASFAGKKGASDNPCSEVYHGPHAN SEVEVKSVDIFIQKHGNFKGFIDLHSYSQLLMYPYGYSVKKAPDAEELDKVARLAAK ALASVSGTEYQVGPTCTTVYPASGSSIDWAYDNGIKFAFTFELRDTGTYGFLLPANQI IPTAEETWLGLKTIMEHVRDONLY
<b>Purity</b>	Greater than 90% as determined by SDS-PAGE.

 Tel: 1-631-559-9269    1-516-512-3133

 Email: [info@creative-biomart.com](mailto:info@creative-biomart.com)     Fax: 1-631-938-8127

 45-1 Ramsey Road, Shirley, NY 11967, USA

**Storage** Store at -20°C/-80°C upon receipt, aliquoting is necessary for mutiple use. Avoid repeated freeze-thaw cycles.

**Reconstitution** Please reconstitute protein indeionized sterile water to a concentration of 0.1-1.0 mg/mL. Aliquot for long-term storage at -80°C.

## GENE INFORMATION

**Gene Name** CPA4 carboxypeptidase A4 [ Homo sapiens ]

**Official Symbol** CPA4

**Synonyms** CPA4; carboxypeptidase A4; carboxypeptidase A3; CPA3;

**Gene ID** 51200

**mRNA Refseq** NM\_001163446

**Protein Refseq** NP\_001156918

**MIM** 607635

**UniProt ID** Q9UI42

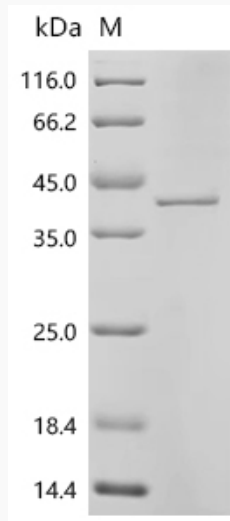
 Tel: 1-631-559-9269 1-516-512-3133

 Email: [info@creative-biomart.com](mailto:info@creative-biomart.com)  Fax: 1-631-938-8127

 45-1 Ramsey Road, Shirley, NY 11967, USA



SDS-PAGE



Tel: 1-631-559-9269 1-516-512-3133

Email: [info@creative-biomart.com](mailto:info@creative-biomart.com) Fax: 1-631-938-8127

45-1 Ramsey Road, Shirley, NY 11967, USA