

## Recombinant Human CPB1 Protein, GST-tagged

Cat. No. CPB1-1777H Lot. No. (See product label)

### SPECIFICATION

<b>Product Overview</b>	Human CPB1 full-length ORF ( AAH15338, 14 a.a. - 417 a.a.) recombinant protein with GST-tag at N-terminal.
<b>Species</b>	Human
<b>Source</b>	Wheat Germ
<b>Description</b>	Three different procarboxypeptidases A and two different procarboxypeptidases B have been isolated. The B1 and B2 forms differ from each other mainly in isoelectric point. Carboxypeptidase B1 is a highly tissue-specific protein and is a useful serum marker for acute pancreatitis and dysfunction of pancreatic transplants. It is not elevated in pancreatic carcinoma. [provided by RefSeq, Jul 2008]
<b>Molecular Mass</b>	70.18 kDa
<b>AA Sequence</b>	SAHHGGEHFEGEKVFRVNVEDENHINIIRELASTTQIDFWKPDSVTQIKPHSTVDFRV KAEDTVTVENVLQKQNELQYKVLISNLRNVVEAQFDSRVRATGHSYKYNKWETIEA WTQQVATENPALISRSVIGTTFEGRAIYLLKVGKAGQNKPAIFMDCGFHAREWISPAF CQWFVREAVRITYGREIQVTELLDKLDFYVLPVLNIDGYIYTWTKSRFWRKTRSTHTG SSCIGTDPNRNFDAGWCEIGASRNPCDETYCGPAAESEKETKALADFIRNKLSSIKA YLTIHYSYSQMMIYPYSYAYKLGENNAELNALAKATVKELASLHGTYGPGATTIYP AAGGSDDWAYDQGIRYSFTFELRDTGRYGFLLPESQIRATCEETFLAIKYVASYLE HLY
<b>Applications</b>	Enzyme-linked Immunoabsorbent Assay

 Tel: 1-631-559-9269 1-516-512-3133

 Email: [info@creative-biomart.com](mailto:info@creative-biomart.com)  Fax: 1-631-938-8127

 45-1 Ramsey Road, Shirley, NY 11967, USA

Western Blot (Recombinant protein)  
 Antibody Production  
 Protein Array

<b>Notes</b>	Best use within three months from the date of receipt of this protein.
<b>Storage</b>	Store at -80 centigrade. Aliquot to avoid repeated freezing and thawing.
<b>Storage Buffer</b>	50 mM Tris-HCl, 10 mM reduced Glutathione, pH=8.0 in the elution buffer.

## GENE INFORMATION

<b>Gene Name</b>	CPB1 carboxypeptidase B1 (tissue) [ Homo sapiens ]
<b>Official Symbol</b>	CPB1
<b>Synonyms</b>	CPB1; carboxypeptidase B1 (tissue); carboxypeptidase B; pancreatic carboxypeptidase B; protaminase; tissue carboxypeptidase B; procarboxypeptidase B; pancreas-specific protein; CPB; PASP; PCPB; DKFZp779K1333;
<b>Gene ID</b>	1360
<b>mRNA Refseq</b>	NM_001871
<b>Protein Refseq</b>	NP_001862
<b>MIM</b>	114852
<b>UniProt ID</b>	P15086

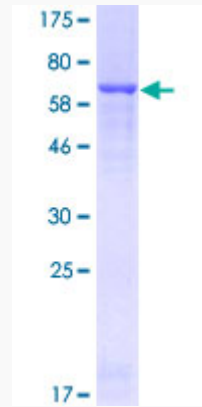
 Tel: 1-631-559-9269 1-516-512-3133

 Email: [info@creative-biomart.com](mailto:info@creative-biomart.com)  Fax: 1-631-938-8127

 45-1 Ramsey Road, Shirley, NY 11967, USA

**Quality Control**

**Testing:**



12.5% SDS-PAGE Stained with Coomassie Blue.

 Tel: 1-631-559-9269 1-516-512-3133

 Email: [info@creative-biomart.com](mailto:info@creative-biomart.com)  Fax: 1-631-938-8127

 45-1 Ramsey Road, Shirley, NY 11967, USA