

Recombinant Human CPB1 Protein, Myc/DDK-tagged, C13 and N15-labeled

Cat. No. CPB1-5100H **Lot. No.** (See product label)

SPECIFICATION

Product Overview

CPB1 MS Standard C13 and N15-labeled recombinant protein (NP_001862) with a C-terminal MYC/DDK tag, was expressed in HEK293 cells.

Species

Human

Source

HEK293

Description

Three different procarboxypeptidases A and two different procarboxypeptidases B have been isolated. The B1 and B2 forms differ from each other mainly in isoelectric point. Carboxypeptidase B1 is a highly tissue-specific protein and is a useful serum marker for acute pancreatitis and dysfunction of pancreatic transplants. It is not elevated in pancreatic carcinoma.

Molecular Mass

47.4 kDa

AA Sequence

MLALLVLTVALASAHHGGEHFEGEKVFRVNVEDENHINIIRELASTTQIDFWKPDSV
 TQIKPHSTVDFRVKAEDTVTVENVLKQNELQYKVLISNLRNVVEAQFDSRVRATGHS
 YEKYNKWETIEAWTQQVATENPALISRSVIGTTFEGRAIYLLKVGKAGQNKPAIFMDC
 GFHAREWISPAFCQWFVREAVR TYGREIQVTELLDKLDFYVLPVLNIDGYIYTWTKS
 RFWRKTRSTHTGSSCIGTDPNRNFDAGWCEIGASRNPCDETYCGPAAESEKETKAL
 ADFIRNKLSSIKAYLTIHSYSQMMIYPYSYAYKLGENNAELNALAKATVKELASLHGK
 YTYGPGATTIYPAAGGSDDWAYDQGIRYSFTFELRDTGRYGFLLPESQIRATCEETF
 LAIKYVASYVLEHLYTRTRPLEQKLISEEDLAANDILDYKDDDDKV

 Tel: 1-631-559-9269 1-516-512-3133

 Email: info@creative-biomart.com  Fax: 1-631-938-8127

 45-1 Ramsey Road, Shirley, NY 11967, USA

Purity	> 80% as determined by SDS-PAGE and Coomassie blue staining
Stability	Stable for 3 months from receipt of products under proper storage and handling conditions.
Storage	Store at -80 centigrade. Avoid repeated freeze-thaw cycles.
Concentration	50 µg/mL as determined by BCA
Storage Buffer	100 mM glycine, 25 mM Tris-HCl, pH 7.3.

GENE INFORMATION

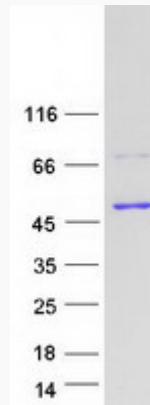
Gene Name	CPB1 carboxypeptidase B1 [Homo sapiens (human)]
Official Symbol	CPB1
Synonyms	CPB1; carboxypeptidase B1 (tissue); carboxypeptidase B; pancreatic carboxypeptidase B; protaminase; tissue carboxypeptidase B; procarboxypeptidase B; pancreas-specific protein; CPB; PASP; PCPB; DKFZp779K1333;
Gene ID	1360
mRNA Refseq	NM_001871
Protein Refseq	NP_001862
MIM	114852
UniProt ID	P15086

 Tel: 1-631-559-9269 1-516-512-3133

 Email: info@creative-biomart.com  Fax: 1-631-938-8127

 45-1 Ramsey Road, Shirley, NY 11967, USA

SDS-PAGE



 Tel: 1-631-559-9269 1-516-512-3133

 Email: info@creative-biomart.com  Fax: 1-631-938-8127

 45-1 Ramsey Road, Shirley, NY 11967, USA