

Recombinant Human CPB2 Protein, GST-tagged

Cat. No. CPB2-1778H **Lot. No.** (See product label)

SPECIFICATION

Product Overview	Human CPB2 full-length ORF (NP_001863.2, 1 a.a. - 423 a.a.) recombinant protein with GST-tag at N-terminal.
Species	Human
Source	Wheat Germ
Description	<p>Carboxypeptidases are enzymes that hydrolyze C-terminal peptide bonds. The carboxypeptidase family includes metallo-, serine, and cysteine carboxypeptidases. According to their substrate specificity, these enzymes are referred to as carboxypeptidase A (cleaving aliphatic residues) or carboxypeptidase B (cleaving basic amino residues). The protein encoded by this gene is activated by trypsin and acts on carboxypeptidase B substrates. After thrombin activation, the mature protein downregulates fibrinolysis. Polymorphisms have been described for this gene and its promoter region. Alternate splicing results in multiple transcript variants. [provided by RefSeq, Jun 2013]</p>
Molecular Mass	74.8 kDa
AA Sequence	<p>MKLCSLAVLVPIVLFCEQHVFVAFQSGQVLAALPRTSRQVQVLQNLTTTYEIVLWQPV TADLIVKKKQVHFFVNASDVDNVKAHLNVSGIPCSVLLADVEDLIQQQISNDTVSPRA SASYEQYHSLNEIYSWIEFITERHPDMLTKIHIGSSFKEYPLYVLKVSQKEQAAKNAI WIDCGIHAREWISPAFCLWFIGHITQFYGIIGQYTNLLRLVDFYVMPVVNVVDGYDYSW KKNRMWRKNRSFYANNHCIGTDLNRNFASKHWCEEAGASSSSCSETYCGLYPESEP</p>

 Tel: 1-631-559-9269 1-516-512-3133

 Email: info@creative-biomart.com  Fax: 1-631-938-8127

 45-1 Ramsey Road, Shirley, NY 11967, USA

EVKAVASFLRRNINQIKAYISMHSYSQHIVFPYSYTRS KSKDHEELSLVASEAVRAIEK
 TSKNTRYTHGHGSETLYLAPGGGDDWIYDLGIKYSFTIELRDTGTYGFLPERYIKPT
 CREAFAAVSKIAWHVIRNV

Applications	Enzyme-linked Immunoabsorbent Assay Western Blot (Recombinant protein) Antibody Production Protein Array
Notes	Best use within three months from the date of receipt of this protein.
Storage	Store at -80 centigrade. Aliquot to avoid repeated freezing and thawing.
Storage Buffer	50 mM Tris-HCl, 10 mM reduced Glutathione, pH=8.0 in the elution buffer.

GENE INFORMATION

Gene Name	CPB2 carboxypeptidase B2 (plasma) [Homo sapiens]
Official Symbol	CPB2
Synonyms	CPB2; carboxypeptidase B2 (plasma); carboxypeptidase B2 (plasma, carboxypeptidase U); carboxypeptidase B2; carboxypeptidase R; carboxypeptidase U; CPU; PCPB; plasma carboxypeptidase B; TAFI; thrombin activatable fibrinolysis inhibitor; carboxypeptidase B-like protein; thrombin-activable fibrinolysis inhibitor; thrombin-activatable fibrinolysis inhibitor;
Gene ID	1361
mRNA Refseq	NM_001872

 Tel: 1-631-559-9269 1-516-512-3133

 Email: info@creative-biomart.com  Fax: 1-631-938-8127

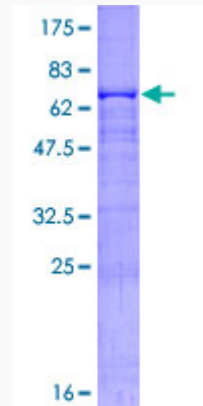
 45-1 Ramsey Road, Shirley, NY 11967, USA

Protein Refseq NP_001863

MIM 603101

UniProt ID Q96IY4

**Quality Control
Testing:**



12.5% SDS-PAGE Stained with Coomassie Blue.

 Tel: 1-631-559-9269 1-516-512-3133

 Email: info@creative-biomart.com  Fax: 1-631-938-8127

 45-1 Ramsey Road, Shirley, NY 11967, USA