

## Recombinant Human CPD protein, hFc-Myc-tagged

Cat. No. CPD-5937H Lot. No. (See product label)

### SPECIFICATION

|                         |  |
|-------------------------|--|
| <b>Product Overview</b> | Recombinant Human CPD protein(O75976)(383-461aa), fused to C-terminal hFc-Myc tag, was expressed in HEK293.  |
| <b>Species</b>          | Human  |
| <b>Source</b>           | HEK293   |
| <b>ProteinLength</b>    | 383-461aa  |
| <b>Form</b>             | If the delivery form is liquid, the default storage buffer is Tris/PBS-based buffer, 5%-50% glycerol. If the delivery form is lyophilized powder, the buffer before lyophilization is Tris/PBS-based buffer, 6% Trehalose, pH 8.0.                             |
| <b>Molecular Mass</b>   | 37.3 kDa   |
| <b>Purity</b>           | Greater than 90% as determined by SDS-PAGE.  |
| <b>Storage</b>          | Store at -20°C/-237°C upon receipt, aliquoting is necessary for mutiple use. Avoid repeated freeze-thaw cycles.  |
| <b>Reconstitution</b>   | Please reconstitute protein in deionized sterile water to a concentration of 0.1-1.0 mg/mL. We recommend to add 5-50% of glycerol (final concentration) and aliquot for long-term storage at -20°C/-80°C. Our default final concentration of glycerol is 207%. |

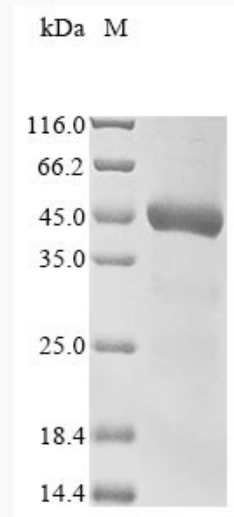
### GENE INFORMATION

 Tel: 1-631-559-9269 1-516-512-3133

 Email: [info@creative-biomart.com](mailto:info@creative-biomart.com)  Fax: 1-631-938-8127

 45-1 Ramsey Road, Shirley, NY 11967, USA

|                        |   |
|------------------------|---|
| <b>Gene Name</b>       | CPD carboxypeptidase D [ Homo sapiens ]                     |
| <b>Official Symbol</b> | CPD   |
| <b>Synonyms</b>        | CPD; carboxypeptidase D; GP180; metallo-carboxypeptidase D; |
| <b>Gene ID</b>         | 1362  |
| <b>mRNA Refseq</b>     | NM_001199775  |
| <b>Protein Refseq</b>  | NP_001186704  |
| <b>MIM</b>             | 603102  |
| <b>UniProt ID</b>      | O75976  |

**SDS-PAGE**


 Tel: 1-631-559-9269 1-516-512-3133

 Email: [info@creative-biomart.com](mailto:info@creative-biomart.com)  Fax: 1-631-938-8127

 45-1 Ramsey Road, Shirley, NY 11967, USA