

Recombinant Human CPE Protein, GST-tagged

Cat. No. CPE-1780H **Lot. No.** (See product label)

SPECIFICATION

Product Overview	Human CPE partial ORF (NP_001864.1, 211 a.a. - 325 a.a.) recombinant protein with GST-tag at N-terminal.
Species	Human
Source	Wheat Germ
Description	This gene encodes a member of the M14 family of metallocarboxypeptidases. The encoded preproprotein is proteolytically processed to generate the mature peptidase. This peripheral membrane protein cleaves C-terminal amino acid residues and is involved in the biosynthesis of peptide hormones and neurotransmitters, including insulin. This protein may also function independently of its peptidase activity, as a neurotrophic factor that promotes neuronal survival, and as a sorting receptor that binds to regulated secretory pathway proteins, including prohormones. Mutations in this gene are implicated in type 2 diabetes. [provided by RefSeq, Nov 2015]
Molecular Mass	38.39 kDa
AA Sequence	LLKNMKKIVDQNTKLAPETKAVIHWIMDIPFVLSANLHGGDLVANYPYDETRSGSAHEYSSPDDAIFQSLARAYSSFNPA MSDPNRPPCRKNDDSSFVDGTTNGGAWYSVPGG
Applications	Enzyme-linked Immunoabsorbent Assay Western Blot (Recombinant protein) Antibody Production

 Tel: 1-631-559-9269 1-516-512-3133

 Email: info@creative-biomart.com  Fax: 1-631-938-8127

 45-1 Ramsey Road, Shirley, NY 11967, USA

Protein Array

Notes	Best use within three months from the date of receipt of this protein.
Storage	Store at -80 centigrade. Aliquot to avoid repeated freezing and thawing.
Storage Buffer	50 mM Tris-HCl, 10 mM reduced Glutathione, pH=8.0 in the elution buffer.

GENE INFORMATION

Gene Name	CPE carboxypeptidase E [Homo sapiens]
Official Symbol	CPE
Synonyms	CPE; carboxypeptidase E; carboxypeptidase H; cobalt stimulated chromaffin granule carboxypeptidase; enkephalin convertase; insulin granule associated carboxypeptidase; CPH; prohormone-processing carboxypeptidase; insulin granule-associated carboxypeptidase; cobalt-stimulated chromaffin granule carboxypeptidase;
Gene ID	1363
mRNA Refseq	NM_001873
Protein Refseq	NP_001864
MIM	114855
UniProt ID	P16870

 Tel: 1-631-559-9269 1-516-512-3133

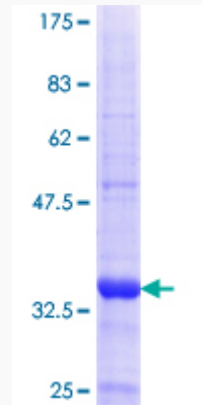
 Email: info@creative-biomart.com  Fax: 1-631-938-8127

 45-1 Ramsey Road, Shirley, NY 11967, USA



Quality Control

Testing:



12.5% SDS-PAGE Stained with Coomassie Blue.

Tel: 1-631-559-9269 1-516-512-3133

Email: info@creative-biomart.com Fax: 1-631-938-8127

45-1 Ramsey Road, Shirley, NY 11967, USA