

# Recombinant Human CPE protein(252-363aa), His-GST&Myc-tagged

**Cat. No.** CPE-4356H    **Lot. No.** (See product label)

## SPECIFICATION

<b>Product Overview</b>	Recombinant Human CPE protein(P16870)(252-363aa), fused with N-terminal His and GST and C-terminal Myc tag, was expressed in E. coli.
<b>Species</b>	Human
<b>Source</b>	E.coli
<b>ProteinLength</b>	252-363aa
<b>Form</b>	If the delivery form is liquid, the default storage buffer is Tris/PBS-based buffer, 5%-50% glycerol. If the delivery form is lyophilized powder, the buffer before lyophilization is Tris/PBS-based buffer, 6% Trehalose, pH 8.0.
<b>Molecular Mass</b>	47.7 kDa
<b>Purity</b>	Greater than 85% as determined by SDS-PAGE.
<b>Storage</b>	Store at -20°C/-80°C upon receipt, aliquoting is necessary for mutiple use. Avoid repeated freeze-thaw cycles.
<b>Reconstitution</b>	We recommend that this vial be briefly centrifuged prior to opening to bring the contents to the bottom. Please reconstitute protein in deionized sterile water to a concentration of 0.1-1.0 mg/mL. We recommend to add 5-50% of glycerol (final concentration) and aliquot for long-term storage at -20°C/-80°C.

 Tel: 1-631-559-9269    1-516-512-3133

 Email: [info@creative-biomart.com](mailto:info@creative-biomart.com)     Fax: 1-631-938-8127

 45-1 Ramsey Road, Shirley, NY 11967, USA

**AA Sequence** LVANYPYDETRSGSAHEYSSSPDDAIFQSLARAYSSFNPMASDPNRPPCRKNDDDS  
SFVDGTTNGGAWYSVPGGMQDFNYLSSNCFEITVELSCEKFPPEETLKTYWEDNK  
N

## GENE INFORMATION

**Gene Name** CPE carboxypeptidase E [ Homo sapiens ]

**Official Symbol** CPE

**Synonyms** CPE; carboxypeptidase E; carboxypeptidase H; cobalt stimulated chromaffin granule carboxypeptidase; enkephalin convertase; insulin granule associated carboxypeptidase; CPH; prohormone-processing carboxypeptidase; insulin granule-associated carboxypeptidase; cobalt-stimulated chromaffin granule carboxypeptidase;

**Gene ID** 1363

**mRNA Refseq** NM\_001873

**Protein Refseq** NP\_001864

**MIM** 114855

**UniProt ID** P16870

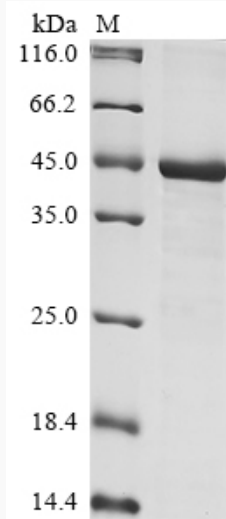
 Tel: 1-631-559-9269 1-516-512-3133

 Email: [info@creative-biomart.com](mailto:info@creative-biomart.com)  Fax: 1-631-938-8127

 45-1 Ramsey Road, Shirley, NY 11967, USA



SDS-PAGE



Tel: 1-631-559-9269 1-516-512-3133

Email: [info@creative-biomart.com](mailto:info@creative-biomart.com) Fax: 1-631-938-8127

45-1 Ramsey Road, Shirley, NY 11967, USA