

Recombinant Human CPLX1 Protein, GST-tagged

Cat. No. CPLX1-1785H Lot. No. (See product label)

SPECIFICATION

Product Overview	Human CPLX1 full-length ORF (AAH02471, 1 a.a. - 134 a.a.) recombinant protein with GST-tag at N-terminal.
Species	Human
Source	Wheat Germ
Description	Proteins encoded by the complexin/synaphin gene family are cytosolic proteins that function in synaptic vesicle exocytosis. These proteins bind syntaxin, part of the SNAP receptor. The protein product of this gene binds to the SNAP receptor complex and disrupts it, allowing transmitter release. [provided by RefSeq, Jul 2008]
Molecular Mass	40.48 kDa
AA Sequence	MEFVMKQALGGATKDMGKMLGGDEEKDPDAAKKEEERQEALRQAEERKAKYAK MEAEREAVRQGIRDKYGIKKKEEREAEAQAAMEANSEGLTRPKKAIPPGCGDEVE EEDESILDTVIKYLPGPLQDMLKK
Applications	Enzyme-linked Immunoabsorbent Assay Western Blot (Recombinant protein) Antibody Production Protein Array
Notes	Best use within three months from the date of receipt of this protein.

 Tel: 1-631-559-9269 1-516-512-3133

 Email: info@creative-biomart.com  Fax: 1-631-938-8127

 45-1 Ramsey Road, Shirley, NY 11967, USA

Storage Store at -80 centigrade. Aliquot to avoid repeated freezing and thawing.

Storage Buffer 50 mM Tris-HCl, 10 mM reduced Glutathione, pH=8.0 in the elution buffer.

GENE INFORMATION

Gene Name CPLX1 complexin 1 [Homo sapiens]

Official Symbol CPLX1

Synonyms CPLX1; complexin 1; complexin-1; CPX I; synaphin 2; synaphin-2; complexin I; CPX1; CPX-I;

Gene ID 10815

mRNA Refseq NM_006651

Protein Refseq NP_006642

MIM 605032

UniProt ID O14810

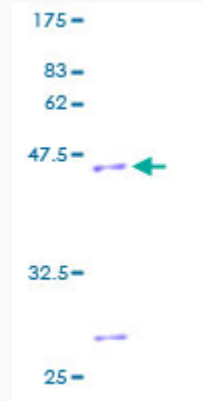
 Tel: 1-631-559-9269 1-516-512-3133

 Email: info@creative-biomart.com  Fax: 1-631-938-8127

 45-1 Ramsey Road, Shirley, NY 11967, USA

Quality Control

Testing:



12.5% SDS-PAGE Stained with Coomassie Blue.

 Tel: 1-631-559-9269 1-516-512-3133

 Email: info@creative-biomart.com  Fax: 1-631-938-8127

 45-1 Ramsey Road, Shirley, NY 11967, USA