

Recombinant Human CPLX1 Protein, Myc/DDK-tagged, C13 and N15-labeled

Cat. No. CPLX1-3658H **Lot. No.** (See product label)

SPECIFICATION

Product Overview	CPLX1 MS Standard C13 and N15-labeled recombinant protein (NP_006642) with a C-terminal MYC/DDK tag, was expressed in HEK293 cells.
Species	Human
Source	HEK293
Description	Proteins encoded by the complexin/synaphin gene family are cytosolic proteins that function in synaptic vesicle exocytosis. These proteins bind syntaxin, part of the SNAP receptor. The protein product of this gene binds to the SNAP receptor complex and disrupts it, allowing transmitter release.
Molecular Mass	15 kDa
AA Sequence	MEFVMKQALGGATKDMGKMLGGDEEKDPDAAKKEEERQEALRQAE EERKAKYAK MEAREAVRQGIRDKYGIKKKEEREAEAQAAMEANSEGLTRPKKAIPPGCGDEVE EEDESILDTVIKYLPGPLQDMLKKTRTRPLEQKLISEEDLAANDILDYKDDDDKV
Purity	> 80% as determined by SDS-PAGE and Coomassie blue staining
Stability	Stable for 3 months from receipt of products under proper storage and handling conditions.
Storage	Store at -80 centigrade. Avoid repeated freeze-thaw cycles.

 Tel: 1-631-559-9269 1-516-512-3133

 Email: info@creative-biomart.com  Fax: 1-631-938-8127

 45-1 Ramsey Road, Shirley, NY 11967, USA

Concentration 50 µg/mL as determined by BCA

Storage Buffer 100 mM glycine, 25 mM Tris-HCl, pH 7.3.

GENE INFORMATION

Gene Name CPLX1 complexin 1 [Homo sapiens (human)]

Official Symbol CPLX1

Synonyms CPLX1; complexin 1; complexin-1; CPX I; synaphin 2; synaphin-2; complexin I; CPX1; CPX-I;

Gene ID 10815

mRNA Refseq NM_006651

Protein Refseq NP_006642

MIM 605032

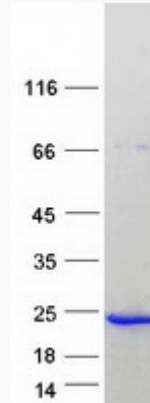
UniProt ID O14810

 Tel: 1-631-559-9269 1-516-512-3133

 Email: info@creative-biomart.com  Fax: 1-631-938-8127

 45-1 Ramsey Road, Shirley, NY 11967, USA

SDS-PAGE



 Tel: 1-631-559-9269 1-516-512-3133

 Email: info@creative-biomart.com  Fax: 1-631-938-8127

 45-1 Ramsey Road, Shirley, NY 11967, USA