

Recombinant Full Length Human complexin 2 Protein, Flag tagged

Cat. No. CPLX2-23HFL Lot. No. (See product label)

SPECIFICATION

Product Overview	Recombinant protein of human complexin 2 (CPLX2), transcript variant 2 with C-Myc/DDK tag was expressed in HEK293.
Species	Human
Source	HEK293
ProteinLength	1-134aa
Description	Proteins encoded by the complexin/synaphin gene family are cytosolic proteins that function in synaptic vesicle exocytosis. These proteins bind syntaxin, part of the SNAP receptor. The protein product of this gene binds to the SNAP receptor complex and disrupts it, allowing transmitter release. Two transcript variants encoding the same protein have been found for this gene.
Tag	C-Flag
Molecular Mass	15.2 kDa
AA Sequence	MDFVMKQALGGATKDMGKMLGGEEEKDPDAQKKEEERQEALRQQEEERKAKHAR MEAEREKVRQQIRDKYGLKKKEEKEAEEKAALEQPCEGSLTRPKKAIPAGCGDEEE EEEEILDVTLKYLPGPLQDMFKKTRTRPLEQKLISEEDLAANDILDYKDDDDKV
Purity	> 80% as determined by SDS-PAGE and Coomassie blue staining

 Tel: 1-631-559-9269 1-516-512-3133

 Email: info@creative-biomart.com  Fax: 1-631-938-8127

 45-1 Ramsey Road, Shirley, NY 11967, USA

Stability	Stable for 12 months from the date of receipt of the product under proper storage and handling conditions. Avoid repeated freeze-thaw cycles.
Storage	Store at -80 centigrade.
Concentration	> 0.05 µg/µL as determined by microplate BCA method
Storage Buffer	25 mM Tris-HCl, 100 mM glycine, pH 7.3, 10% glycerol
Notes	For testing in cell culture applications, please filter before use. Note that you may experience some loss of protein during the filtration process.

GENE INFORMATION

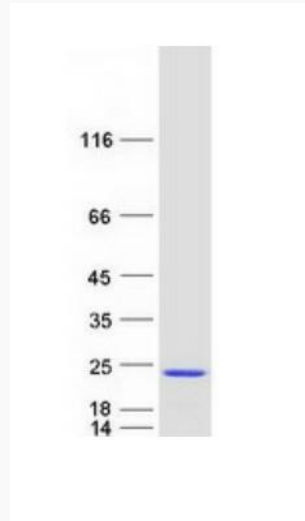
Gene Name	CPLX2 complexin 2 [Homo sapiens (human)]
Official Symbol	CPLX2
Synonyms	CPLX2; complexin 2; complexin-2; CPX 2; DKFZp547D155; CPX II; synaphin 1; synaphin-1; complexin II; CPX2; Hfb1; 921-L; CPX-2; MGC138492;
Gene ID	10814
mRNA Refseq	NM_001008220
Protein Refseq	NP_001008221
MIM	605033
UniProt ID	Q6PUV4

 Tel: 1-631-559-9269 1-516-512-3133

 Email: info@creative-biomart.com  Fax: 1-631-938-8127

 45-1 Ramsey Road, Shirley, NY 11967, USA

SDS-PAGE



 Tel: 1-631-559-9269 1-516-512-3133

 Email: info@creative-biomart.com  Fax: 1-631-938-8127

 45-1 Ramsey Road, Shirley, NY 11967, USA