

# Recombinant Human CPLX2 Protein, Myc/DDK-tagged, C13 and N15-labeled

Cat. No. CPLX2-5683H Lot. No. (See product label)

## SPECIFICATION

<b>Product Overview</b>	CPLX2 MS Standard C13 and N15-labeled recombinant protein (NP_006641) with a C-terminal MYC/DDK tag, was expressed in HEK293 cells.
<b>Species</b>	Human
<b>Source</b>	HEK293
<b>Description</b>	Proteins encoded by the complexin/synaphin gene family are cytosolic proteins that function in synaptic vesicle exocytosis. These proteins bind syntaxin, part of the SNAP receptor. The protein product of this gene binds to the SNAP receptor complex and disrupts it, allowing transmitter release. Two transcript variants encoding the same protein have been found for this gene.
<b>Molecular Mass</b>	15.4 kDa
<b>AA Sequence</b>	MDFVMKQALGGATKDMGKMLGGEEKDPDAQKKEEERQEALRQQEEERKAKHAR MEAREKVRQQIRDKYGLKKKEEKEAEEKAALEQPCEGSLTRPKKAIPAGCGDEEE EEEEILDVTLKYLPGLQDMFKKTRTRPLEQKLISEEDLAANDILDYKDDDDKV
<b>Purity</b>	> 80% as determined by SDS-PAGE and Coomassie blue staining
<b>Stability</b>	Stable for 3 months from receipt of products under proper storage and handling conditions.

 Tel: 1-631-559-9269 1-516-512-3133

 Email: [info@creative-biomart.com](mailto:info@creative-biomart.com)  Fax: 1-631-938-8127

 45-1 Ramsey Road, Shirley, NY 11967, USA

<b>Storage</b>	Store at -80 centigrade. Avoid repeated freeze-thaw cycles.
----------------	---

<b>Concentration</b>	50 µg/mL as determined by BCA
----------------------	-------------------------------

<b>Storage Buffer</b>	100 mM glycine, 25 mM Tris-HCl, pH 7.3.
-----------------------	---

## GENE INFORMATION

<b>Gene Name</b>	CPLX2 complexin 2 [ Homo sapiens (human) ]
------------------	--

<b>Official Symbol</b>	CPLX2
------------------------	-------

<b>Synonyms</b>	CPLX2; complexin 2; complexin-2; CPX 2; DKFZp547D155; CPX II; synaphin 1; synaphin-1; complexin II; CPX2; Hfb1; 921-L; CPX-2; MGC138492;
-----------------	--

<b>Gene ID</b>	10814
----------------	-------

<b>mRNA Refseq</b>	NM_006650
--------------------	-----------

<b>Protein Refseq</b>	NP_006641
-----------------------	-----------

<b>MIM</b>	605033
------------	--------

<b>UniProt ID</b>	Q6PUV4
-------------------	--------

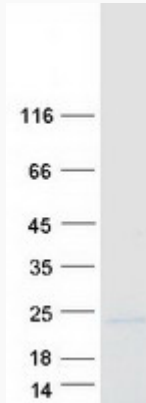
 Tel: 1-631-559-9269 1-516-512-3133

 Email: [info@creative-biomart.com](mailto:info@creative-biomart.com)  Fax: 1-631-938-8127

 45-1 Ramsey Road, Shirley, NY 11967, USA



SDS-PAGE



Tel: 1-631-559-9269 1-516-512-3133

Email: [info@creative-biomart.com](mailto:info@creative-biomart.com) Fax: 1-631-938-8127

45-1 Ramsey Road, Shirley, NY 11967, USA