

Recombinant Human CPLX3 Protein, GST-tagged

Cat. No. CPLX3-1787H Lot. No. (See product label)

SPECIFICATION

Product Overview	Human CPLX3 full-length ORF (NP_001025176.1, 1 a.a. - 158 a.a.) recombinant protein with GST tag at N-terminal.
Species	Human
Source	Wheat Germ
Description	CPLX3 (Complexin 3) is a Protein Coding gene. Diseases associated with CPLX3 include Acute Dacryocystitis and Chromosome 15Q24 Deletion Syndrome. Among its related pathways are Synaptic vesicle cycle. GO annotations related to this gene include syntaxin binding and neurotransmitter transporter activity. An important paralog of this gene is CPLX4.
Molecular Mass	44 kDa
AA Sequence	MAFMVKTMVGGQLKNLTGSLGGGEDKGDGDKSAAEAQGMSREEYEEYQKQLVEE KMERDAQFTQRKAERATLRSHFRDKYRLPKNETDESQIQMAGGDVELPRELAKMIE EDTEEEEEKASVLGQLASLPGLNLGSLKDKAQATLGDLKQSAEKCHVM
Applications	Enzyme-linked Immunoabsorbent Assay Western Blot (Recombinant protein) Antibody Production Protein Array
Notes	Best use within three months from the date of receipt of this protein.

 Tel: 1-631-559-9269 1-516-512-3133

 Email: info@creative-biomart.com  Fax: 1-631-938-8127

 45-1 Ramsey Road, Shirley, NY 11967, USA

Storage Store at -80 centigrade. Aliquot to avoid repeated freezing and thawing.

Storage Buffer 50 mM Tris-HCl, 10 mM reduced Glutathione, pH=8.0 in the elution buffer.

GENE INFORMATION

Gene Name CPLX3 complexin 3 [Homo sapiens]

Official Symbol CPLX3

Synonyms CPLX3; complexin 3; complexin-3; CPX III; complexin III; CPXIII; CPX-III; Nbla11589; FLJ00167; FLJ00250; FLJ13993; DKFZp434E1719;

Gene ID 594855

mRNA Refseq NM_001030005

Protein Refseq NP_001025176

MIM 609585

UniProt ID Q8WVH0

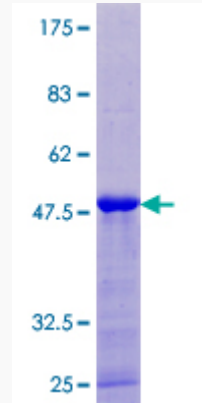
 Tel: 1-631-559-9269 1-516-512-3133

 Email: info@creative-biomart.com  Fax: 1-631-938-8127

 45-1 Ramsey Road, Shirley, NY 11967, USA

Quality Control

Testing:



12.5% SDS-PAGE Stained with Coomassie Blue

 Tel: 1-631-559-9269 1-516-512-3133

 Email: info@creative-biomart.com  Fax: 1-631-938-8127

 45-1 Ramsey Road, Shirley, NY 11967, USA