

## Recombinant Human CPM Protein, GST-tagged

Cat. No. CPM-1789H    Lot. No. (See product label)

### SPECIFICATION

<b>Product Overview</b>	Human CPM full-length ORF ( NP_001005502.1, 1 a.a. - 443 a.a.) recombinant protein with GST-tag at N-terminal.
<b>Species</b>	Human
<b>Source</b>	Wheat Germ
<b>Description</b>	The protein encoded by this gene is a membrane-bound arginine/lysine carboxypeptidase. Its expression is associated with monocyte to macrophage differentiation. This encoded protein contains hydrophobic regions at the amino and carboxy termini and has 6 potential asparagine-linked glycosylation sites. The active site residues of carboxypeptidases A and B are conserved in this protein. Three alternatively spliced transcript variants encoding the same protein have been described for this gene. [provided by RefSeq, Jul 2008]
<b>Molecular Mass</b>	76.9 kDa
<b>AA Sequence</b>	MDFPCLWLGLLLPLVAALDFNYHRQEGMEAFKLTVAQNYSSVTHLHSIGKSVKGRN LWVLLVVGFRFPKEHRIGIPEFKYVANMHGDETVGRELLHLIDYLVTS DGKDPEITNLIN STRIHIMPSMNPDGFEAVKKPDCYYSIGREYNQYDLNRNFPDAFEYNNVSRQPET VAVMKWLKTETFVLSANLHGGALVASYPFDNGVQATGALYSRSLTPDDDDVFQYLAH TYASRNPNMKKGDECKNKMNFNGVTNGYSWYPLQGGMQDYN IWAQCFEITL EL SCCKYPREEKLP SFWNNNKASLIEYIKQVHLGVKGVFDQNGNPLPNVIVEVQDRK HICPYRTNKYGEY YLLLLPGSYIINVTVP GHDPHITKVIIEK SQNF SALKK DILLPFQ G

 Tel: 1-631-559-9269    1-516-512-3133

 Email: [info@creative-biomart.com](mailto:info@creative-biomart.com)     Fax: 1-631-938-8127

 45-1 Ramsey Road, Shirley, NY 11967, USA

QLDSIPVSNPSCPMIPLYRNLPDHSAATKPSLFLFLVSLHIFFK

**Applications**

Enzyme-linked Immunoabsorbent Assay  
 Western Blot (Recombinant protein)  
 Antibody Production  
 Protein Array

**Notes**

Best use within three months from the date of receipt of this protein.

**Storage**

Store at -80 centigrade. Aliquot to avoid repeated freezing and thawing.

**Storage Buffer**

50 mM Tris-HCl, 10 mM reduced Glutathione, pH=8.0 in the elution buffer.

## GENE INFORMATION

**Gene Name**

CPM carboxypeptidase M [ Homo sapiens ]

**Official Symbol**

CPM

**Synonyms**

CPM; carboxypeptidase M; renal carboxypeptidase; urinary carboxypeptidase B;

**Gene ID**

1368

**mRNA Refseq**

NM\_001874

**Protein Refseq**

NP\_001865

**MIM**


114860

**UniProt ID**

P14384

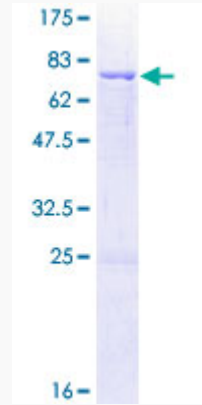
 Tel: 1-631-559-9269 1-516-512-3133

 Email: [info@creative-biomart.com](mailto:info@creative-biomart.com)  Fax: 1-631-938-8127


 45-1 Ramsey Road, Shirley, NY 11967, USA

**Quality Control**


**Testing:**



12.5% SDS-PAGE Stained with Coomassie Blue.

 Tel: 1-631-559-9269 1-516-512-3133

 Email: [info@creative-biomart.com](mailto:info@creative-biomart.com)  Fax: 1-631-938-8127

 45-1 Ramsey Road, Shirley, NY 11967, USA