

Active Recombinant Human CPM protein, His-tagged

Cat. No. CPM-660H Lot. No. (See product label)

SPECIFICATION

Product Overview	Active Recombinant Human CPM protein(NP_938079.1)(Met 1-His 422) was expressed in HEK293, fused with a polyhistidine tag at the C-terminus.
Species	Human
Source	HEK293
ProteinLength	1-422 aa
Form	Lyophilized from sterile PBS, pH 7.4.
Bio-activity	Measured by its ability to release Larginine from BenzoylAlaArg, with detection of the arginine amino group by ophthaldialdehyde. The specific activity is >40,000 pmoles/min/μg.
Molecular Mass	The secreted recombinant human CPM comprises 416 amino acids and has a predicted molecular mass of 47.7 kDa as estimated in SDS-PAGE under reducing conditions.
Endotoxin	< 1.0 EU per μg of the protein as determined by the LAL method.
Purity	> 98 % as determined by SDS-PAGE
Storage	Store it under sterile conditions at -20°C to -80°C upon receiving. Recommend to aliquot the protein into smaller quantities for optimal storage. Avoid repeated freeze-

 Tel: 1-631-559-9269 1-516-512-3133

 Email: info@creative-biomart.com  Fax: 1-631-938-8127

 45-1 Ramsey Road, Shirley, NY 11967, USA

thaw cycles.

Reconstitution

It is recommended that sterile water be added to the vial to prepare a stock solution of 0.2 ug/ul. Centrifuge the vial at 4°C before opening to recover the entire contents.

protein Refseq-Weblink

http://www.ncbi.nlm.nih.gov/protein/NP_001865.1

Unit ID

P14384

Unit ID-Weblink

<https://www.uniprot.org/uniprotkb/P14384>

GENE INFORMATION

Gene Name

CPM carboxypeptidase M [Homo sapiens]

Official Symbol

CPM

Synonyms

CPM; carboxypeptidase M; renal carboxypeptidase; urinary carboxypeptidase B;

Gene ID

1368

mRNA Refseq

NM_001874

protein Refseq

NP_001865

MIM

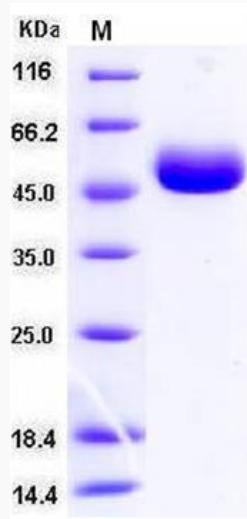
114860

 Tel: 1-631-559-9269 1-516-512-3133

 Email: info@creative-biomart.com  Fax: 1-631-938-8127

 45-1 Ramsey Road, Shirley, NY 11967, USA

SDS-PAGE



 Tel: 1-631-559-9269 1-516-512-3133

 Email: info@creative-biomart.com  Fax: 1-631-938-8127

 45-1 Ramsey Road, Shirley, NY 11967, USA