

## Recombinant Human CPN1 Protein, GST-tagged

Cat. No. CPN1-1791H Lot. No. (See product label)

### SPECIFICATION

<b>Product Overview</b>	Human CPN1 full-length ORF ( NP_001299.1, 1 a.a. - 458 a.a.) recombinant protein with GST-tag at N-terminal.
<b>Species</b>	Human
<b>Source</b>	Wheat Germ
<b>Description</b>	Carboxypeptidase N is a plasma metallo-protease that cleaves basic amino acids from the C terminal of peptides and proteins. The enzyme is important in the regulation of peptides like kinins and anaphylatoxins, and has also been known as kininase-1 and anaphylatoxin inactivator. This enzyme is a tetramer comprised of two identical regulatory subunits and two identical catalytic subunits; this gene encodes the catalytic subunit. Mutations in this gene can be associated with angioedema or chronic urticaria resulting from carboxypeptidase N deficiency. [provided by RefSeq, Jul 2008]
<b>Molecular Mass</b>	78.7 kDa
<b>AA Sequence</b>	MSDLLSVFLHLLLLFKLVAPVTFRRHRYDDLVRTLYKVQNECPGITRVYSIGRSVEGR HLYVLEFSDHPIHEPLEPEVKYVGNMHGNEALGREMLQLSEFLCEEFRNRNRQIV QLIQDTRIHILPSMNPDGYEVAQAQGNKPGYLVGRNANGVDLNRNFPDLNTYIYY NEKYGGPNHHLPLPDNWKSQVEPETRAVIRWMHSFNFLSANLHGGAVVANYPYD KSFHRVRGVRRTASTPTPDDKLFQKLAKVYSYAHGWMFQGWNCGDYFPDGITNG ASWYLSKGMQDFNYLHTNCFEITLLELSCDKFPPEEELQREWLGNREALIQFLEQVH

 Tel: 1-631-559-9269 1-516-512-3133

 Email: [info@creative-biomart.com](mailto:info@creative-biomart.com)  Fax: 1-631-938-8127

 45-1 Ramsey Road, Shirley, NY 11967, USA

QGIKGMVLDENYNNLANAVISVSGINHDTVSGDHGDYFRLLLPGIYTVSATAPGYDP  
 ETVTVTVGPAEPTLVNFHLKRSIPQVSPVRRAPSRRHGVRAKVQPQARKKEMEMR  
 QLQRGPA

<b>Applications</b>	Enzyme-linked Immunoabsorbent Assay Western Blot (Recombinant protein) Antibody Production Protein Array
<b>Notes</b>	Best use within three months from the date of receipt of this protein.
<b>Storage</b>	Store at -80 centigrade. Aliquot to avoid repeated freezing and thawing.
<b>Storage Buffer</b>	50 mM Tris-HCl, 10 mM reduced Glutathione, pH=8.0 in the elution buffer.

## GENE INFORMATION

<b>Gene Name</b>	CPN1 carboxypeptidase N, polypeptide 1 [ Homo sapiens ]
<b>Official Symbol</b>	CPN1
<b>Synonyms</b>	CPN1; carboxypeptidase N, polypeptide 1; carboxypeptidase N, polypeptide 1, 50kD; carboxypeptidase N catalytic chain; anaphylatoxin inactivator; arginine carboxypeptidase; carboxypeptidase K; kininase I; lysine carboxypeptidase; kininase-1; serum carboxypeptidase N; plasma carboxypeptidase B; carboxypeptidase N small subunit; carboxypeptidase N catalytic subunit; carboxypeptidase N polypeptide 1 50 kD; CPN; SCPN; FLJ40792;
<b>Gene ID</b>	1369
<b>mRNA Refseq</b>	NM_001308

Tel: 1-631-559-9269 1-516-512-3133

Email: [info@creative-biomart.com](mailto:info@creative-biomart.com) Fax: 1-631-938-8127

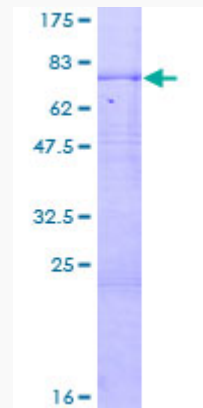
45-1 Ramsey Road, Shirley, NY 11967, USA

Protein Refseq NP\_001299

MIM 603103

UniProt ID P15169

Quality Control  
Testing:



12.5% SDS-PAGE Stained with Coomassie Blue.

Tel: 1-631-559-9269 1-516-512-3133

Email: [info@creative-biomart.com](mailto:info@creative-biomart.com) Fax: 1-631-938-8127

45-1 Ramsey Road, Shirley, NY 11967, USA