

## Recombinant Human CPN1 Protein (Leu159-Leu325), N-His tagged

Cat. No. CPN1-1796H Lot. No. (See product label)

### SPECIFICATION

<b>Product Overview</b>	Recombinant human CPN1 (Leu159-Leu325) fused with N-His tag was expressed in E. coli.
<b>Species</b>	Human
<b>Source</b>	E.coli
<b>ProteinLength</b>	Leu159-Leu325
<b>Form</b>	Lyophilized powder/frozen liquid
<b>Molecular Mass</b>	21.87 kDa
<b>Purity</b>	>90% as determined by SDS-PAGE
<b>Notes</b>	For research use only.
<b>Storage</b>	Use a manual defrost freezer and avoid repeated freeze thaw cycles. Store at 2 to 8 centigrade for one week. Store at -20 to -80 centigrade for twelve months from the date of receipt.
<b>Storage Buffer</b>	0.01M PBS, pH 7.4, 0.02% NLS
<b>Reconstitution</b>	Reconstitute in sterile water for a stock solution.

 Tel: 1-631-559-9269 1-516-512-3133

 Email: [info@creative-biomart.com](mailto:info@creative-biomart.com)  Fax: 1-631-938-8127

 45-1 Ramsey Road, Shirley, NY 11967, USA

**Shipping** They are shipped out with dry ice/blue ice unless customers require otherwise.

## GENE INFORMATION

**Gene Name** CPN1 carboxypeptidase N, polypeptide 1 [ Homo sapiens (human) ]

**Official Symbol** CPN1

**Synonyms**

CPN1; carboxypeptidase N, polypeptide 1; carboxypeptidase N, polypeptide 1, 50kD; carboxypeptidase N catalytic chain; anaphylatoxin inactivator; arginine carboxypeptidase; carboxypeptidase K; kininase I; lysine carboxypeptidase; kininase-1; serum carboxypeptidase N; plasma carboxypeptidase B; carboxypeptidase N small subunit; carboxypeptidase N catalytic subunit; carboxypeptidase N polypeptide 1 50 kD; CPN; SCPN; FLJ40792;

**Gene ID** 1369

**mRNA Refseq** NM\_001308

**Protein Refseq** NP\_001299

**MIM** 603103

**UniProt ID** P15169

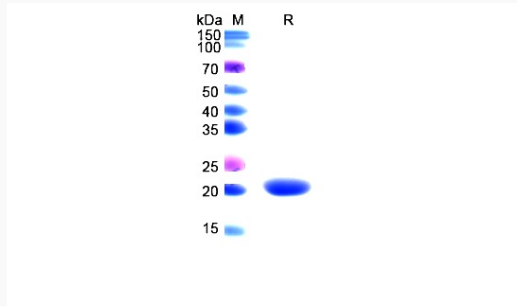
 Tel: 1-631-559-9269 1-516-512-3133

 Email: [info@creative-biomart.com](mailto:info@creative-biomart.com)  Fax: 1-631-938-8127

 45-1 Ramsey Road, Shirley, NY 11967, USA



SDS-PAGE



Tel: 1-631-559-9269 1-516-512-3133

Email: [info@creative-biomart.com](mailto:info@creative-biomart.com) Fax: 1-631-938-8127

45-1 Ramsey Road, Shirley, NY 11967, USA