

## Recombinant Human CPN1 protein

**Cat. No.** CPN1-3532H    **Lot. No.** (See product label)

### SPECIFICATION

<b>Product Overview</b>	Recombinant Human CPN1 protein(P15169)(21-418aa) was expressed in E.coli.
<b>Species</b>	Human
<b>Source</b>	E.coli
<b>ProteinLength</b>	21-418aa
<b>Form</b>	If the delivery form is liquid, the default storage buffer is Tris/PBS-based buffer, 5%-50% glycerol. If the delivery form is lyophilized powder, the buffer before lyophilization is Tris/PBS-based buffer, 6% Trehalose, pH 8.0.
<b>Molecular Mass</b>	45.6 kDa
<b>Purity</b>	Greater than 85% as determined by SDS-PAGE.
<b>Storage</b>	Store at -20°C/-80°C upon receipt, aliquoting is necessary for mutiple use. Avoid repeated freeze-thaw cycles.
<b>Reconstitution</b>	We recommend that this vial be briefly centrifuged prior to opening to bring the contents to the bottom. Please reconstitute protein in deionized sterile water to a concentration of 0.1-1.0 mg/mL. We recommend to add 5-50% of glycerol (final concentration) and aliquot for long-term storage at -20°C/-80°C.
<b>AA Sequence</b>	VTFRHHRYYDDLVRTLYKVVQNECPGITRVYSIGRSVEGRHLYVLEFSDHPGIHEPLEP

 Tel: 1-631-559-9269    1-516-512-3133

 Email: [info@creative-biomart.com](mailto:info@creative-biomart.com)     Fax: 1-631-938-8127

 45-1 Ramsey Road, Shirley, NY 11967, USA

EVKYVGNMHGNEALGREMLQLSEFLCEEFRNRNQ RIVQLIQDTRIHILPSMNP DG Y  
 EVAAAQGP NKPGYL VGRNNANGVDLNRNFPDLNTYIYYNEKYGGPNHHLPLPDNW  
 KSQVEPETRAVIRWMHSFNFLSANLHGGAVVANYPYDKSFEHRV RGVRR TASTPT  
 PDDKLFQKLAKVYSYAHGWMFQGWNCGDYFPD GITNGASWYSLSKGMQDFNYLH  
 TNCFEITL ELS CDKFPPEEELQREWLGNREALIQFLEQVHQGIKGMVLDENYNNLAN  
 AVISVSGINH DVTSGDHGDYFRLLLPGIYTVSATAPGYDPETVTVTVGPAEPTLVNFH  
 LKRS

## GENE INFORMATION

**Gene Name** CPN1 carboxypeptidase N, polypeptide 1 [ Homo sapiens ]

**Official Symbol** CPN1

**Synonyms**

CPN1; carboxypeptidase N, polypeptide 1; carboxypeptidase N, polypeptide 1, 50kD; carboxypeptidase N catalytic chain; anaphylatoxin inactivator; arginine carboxypeptidase; carboxypeptidase K; kininase I; lysine carboxypeptidase; kininase-1; serum carboxypeptidase N; plasma carboxypeptidase B; carboxypeptidase N small subunit; carboxypeptidase N catalytic subunit; carboxypeptidase N polypeptide 1 50 kD; CPN; SCPN; FLJ40792;

**Gene ID** 1369

**mRNA Refseq** NM\_001308

**Protein Refseq** NP\_001299

**MIM** 603103

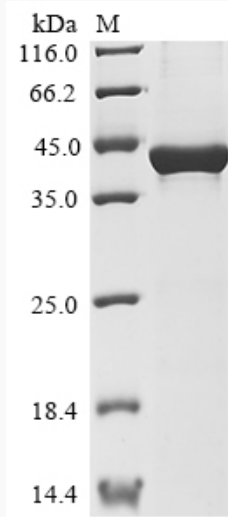
**UniProt ID** P15169

 Tel: 1-631-559-9269 1-516-512-3133

 Email: [info@creative-biomart.com](mailto:info@creative-biomart.com)  Fax: 1-631-938-8127

 45-1 Ramsey Road, Shirley, NY 11967, USA

**SDS-PAGE**



 Tel: 1-631-559-9269 1-516-512-3133

 Email: [info@creative-biomart.com](mailto:info@creative-biomart.com)  Fax: 1-631-938-8127

 45-1 Ramsey Road, Shirley, NY 11967, USA