

Recombinant Human CPN1 protein, His-tagged

Cat. No. CPN1-8437H Lot. No. (See product label)

SPECIFICATION

Product Overview	Recombinant Human CPN1 protein(P15169)(21-458aa), fused with N-terminal His tag, was expressed in E.coli.
Species	Human
Source	E.coli
ProteinLength	21-458aa
Form	If the delivery form is liquid, the default storage buffer is Tris/PBS-based buffer, 5%-50% glycerol. If the delivery form is lyophilized powder, the buffer before lyophilization is Tris/PBS-based buffer, 6% Trehalose, pH 8.0.
Molecular Mass	54.1 kDa
Purity	Greater than 85% as determined by SDS-PAGE.
Storage	Store at -20°C/-80°C upon receipt, aliquoting is necessary for mutiple use. Avoid repeated freeze-thaw cycles.
Reconstitution	We recommend that this vial be briefly centrifuged prior to opening to bring the contents to the bottom. Please reconstitute protein in deionized sterile water to a concentration of 0.1-1.0 mg/mL. We recommend to add 5-50% of glycerol (final concentration) and aliquot for long-term storage at -20°C/-80°C.

 Tel: 1-631-559-9269 1-516-512-3133

 Email: info@creative-biomart.com  Fax: 1-631-938-8127

 45-1 Ramsey Road, Shirley, NY 11967, USA

AA Sequence

VTFRHHRYDDLVRTLYKVVQNECPGITRVYSIGRSVEGRHLYVLEFSDHPGIHEPLEP
 EVKYVGNMHGNEALGRELMLQLSEFLCEEFRNRNQIRIVQLIQDTRIHILPSMNPDG
 EVAAAQGPKNKPGYLVGRNNANGVDLNRNFPDLNTYIYYNEKYGGPNHHLPLPDNW
 KSQVEPETRAVIRWMHSFNFLSANLHGGAVVANYPYDKSFEHRVVRGVRRTASTPT
 PDDKLFQKLAKVYSYAHGWMFQGWNCGDYFPDGITNGASWYSLSKGMQDFNYLH
 TNCFEITLLESCDKFPPEEELQREWLGNREALIQFLEQVHQGIKGMVLDENYNNLAN
 AVISVSGINHDTVSGDHGDYFRLLLPGIYTVSATAPGYDPETVTVTVGPAEPTLVNFH
 LKRSIPQVSPVRRAPSRRHGVRRAKVQPQARKKEMEMRQLQRGPA

GENE INFORMATION

Gene Name CPN1 carboxypeptidase N, polypeptide 1 [Homo sapiens]

Official Symbol CPN1

Synonyms

CPN1; carboxypeptidase N, polypeptide 1; carboxypeptidase N, polypeptide 1, 50kD;
 carboxypeptidase N catalytic chain; anaphylatoxin inactivator; arginine
 carboxypeptidase; carboxypeptidase K; kininase I; lysine carboxypeptidase; kininase-
 1; serum carboxypeptidase N; plasma carboxypeptidase B; carboxypeptidase N small
 subunit; carboxypeptidase N catalytic subunit; carboxypeptidase N polypeptide 1 50
 kD; CPN; SCPN; FLJ40792;

Gene ID 1369

mRNA Refseq NM_001308

Protein Refseq NP_001299

MIM 603103

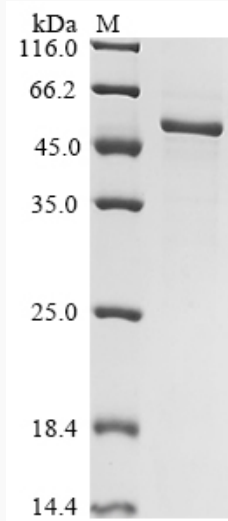
UniProt ID P15169

 Tel: 1-631-559-9269 1-516-512-3133

 Email: info@creative-biomart.com  Fax: 1-631-938-8127

 45-1 Ramsey Road, Shirley, NY 11967, USA

SDS-PAGE



 Tel: 1-631-559-9269 1-516-512-3133

 Email: info@creative-biomart.com  Fax: 1-631-938-8127

 45-1 Ramsey Road, Shirley, NY 11967, USA