

Recombinant Human CPNE1 Protein, GST-tagged

Cat. No. CPNE1-1792H Lot. No. (See product label)

SPECIFICATION

Product Overview	Human CPNE1 full-length ORF (AAH01142, 1 a.a. - 537 a.a.) recombinant protein with GST-tag at N-terminal.
Species	Human
Source	Wheat Germ
Description	Calcium-dependent membrane-binding proteins may regulate molecular events at the interface of the cell membrane and cytoplasm. This gene encodes a calcium-dependent protein that also contains two N-terminal type II C2 domains and an integrin A domain-like sequence in the C-terminus. However, the encoded protein does not contain a predicted signal sequence or transmembrane domains. This protein has a broad tissue distribution and it may function in membrane trafficking. This gene and the gene for RNA binding motif protein 12 overlap at map location 20q11.21. Alternate splicing results in multiple transcript variants encoding different proteins. [provided by RefSeq, Aug 2008]
Molecular Mass	84.59 kDa
AA Sequence	MAHCVTLVQLSISCDHLIDKDIGSKSDPLCVLLQDVGGGSWAELGRTERVRNCSSPE FSKTLQLEYRFETVQKLRFGIYDIDNKTPELRDDDFLGGAECSLGQIVSSQVLTPLM LKPGKPAGRGTTVSAQELKDNRVVTMEVEARNLDDKDFLGKSDPFLEFFRQGDGK WHLVYRSEVIKNNLNPTWKRFSVPVQHFCCGNPSTPIQVQCSDYDSGDGSHDLIGTF HTSLAQLQAVPAEFECIHPEKQQKKKSYKNSGTIRVKICRVETEYSFLDYVMGGCQI

 Tel: 1-631-559-9269 1-516-512-3133

 Email: info@creative-biomart.com  Fax: 1-631-938-8127

 45-1 Ramsey Road, Shirley, NY 11967, USA

NFTVGVDFTGSSNGDPSSPDSLHYLSPTGVNEYLMALWSVGSVVQDYDSDKLFPAF
 GFQAQVPPDWQVSHEFALNFNPSNPYCAGIQGIVDAYRQALPQVRLYGPTNFAPIIN
 HVARFAAQAAHQGTASQYFMLLLLTDGAVTDVEATREAVVRASNLPMMSVIIVGVGGA
 DFEAMEQLDADGGPLHTRSGQAAARDIVQFVPYRRFQNAPREALAQTVLAEVPTQL
 VSYFRAQGWAPLKPLPPSAKDPAQAPQA

Applications
 Enzyme-linked Immunoabsorbent Assay
 Western Blot (Recombinant protein)
 Antibody Production
 Protein Array

Notes
 Best use within three months from the date of receipt of this protein.

Storage
 Store at -80 centigrade. Aliquot to avoid repeated freezing and thawing.

Storage Buffer
 50 mM Tris-HCl, 10 mM reduced Glutathione, pH=8.0 in the elution buffer.

GENE INFORMATION

Gene Name [CPNE1 copine I \[Homo sapiens \]](#)

Official Symbol [CPNE1](#)

Synonyms CPNE1; copine I; copine-1; CPN1; COPN1; MGC1142;

Gene ID [8904](#)

mRNA Refseq [NM_001198863](#)

Protein Refseq [NP_001185792](#)

 Tel: 1-631-559-9269 1-516-512-3133

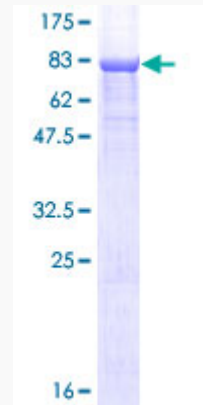
 Email: info@creative-biomart.com  Fax: 1-631-938-8127

 45-1 Ramsey Road, Shirley, NY 11967, USA

MIM 604205

UniProt ID Q99829

**Quality Control
Testing:**



12.5% SDS-PAGE Stained with Coomassie Blue.

 Tel: 1-631-559-9269 1-516-512-3133

 Email: info@creative-biomart.com  Fax: 1-631-938-8127

 45-1 Ramsey Road, Shirley, NY 11967, USA