

Recombinant Human CPNE1 Protein (Met1-Ala537), C-His and N-His tagged

Cat. No. CPNE1-2264H Lot. No. (See product label)

SPECIFICATION

Product Overview	Recombinant human CPNE1 (Met1-Ala537) fused with C-terminal His tag and N-terminal His tag was expressed in E. coli.
Species	Human
Source	E.coli
ProteinLength	Met1-Ala537
Form	Lyophilized powder/frozen liquid
Molecular Mass	59.07 kDa
Purity	>90% as determined by SDS-PAGE
Notes	For research use only.
Storage	Use a manual defrost freezer and avoid repeated freeze thaw cycles. Store at 2 to 8 centigrade for one week. Store at -20 to -80 centigrade for twelve months from the date of receipt.
Storage Buffer	Supplied as solution form in PBS or lyophilized from PBS.
Reconstitution	Reconstitute in sterile water for a stock solution.

 Tel: 1-631-559-9269 1-516-512-3133

 Email: info@creative-biomart.com  Fax: 1-631-938-8127

 45-1 Ramsey Road, Shirley, NY 11967, USA

Shipping

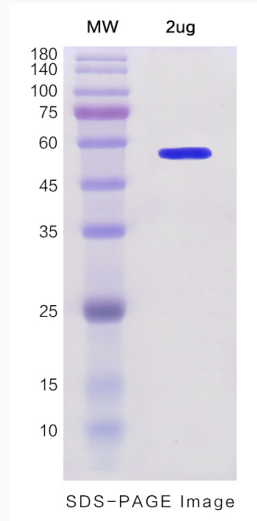
They are shipped out with dry ice/blue ice unless customers require otherwise.

GENE INFORMATION

Gene Name	CPNE1 copine I [Homo sapiens (human)]
Official Symbol	CPNE1
Synonyms	CPNE1; copine I; copine-1; CPN1; COPN1; MGC1142;
Gene ID	8904
mRNA Refseq	NM_001198863
Protein Refseq	NP_001185792
MIM	604205
UniProt ID	Q99829

 Tel: 1-631-559-9269 1-516-512-3133 Email: info@creative-biomart.com  Fax: 1-631-938-8127 45-1 Ramsey Road, Shirley, NY 11967, USA

SDS-PAGE



 Tel: 1-631-559-9269 1-516-512-3133

 Email: info@creative-biomart.com  Fax: 1-631-938-8127

 45-1 Ramsey Road, Shirley, NY 11967, USA