

Recombinant Human CPNE1 Protein, MYC/DDK-tagged, C13 and N15-labeled

Cat. No. CPNE1-396H **Lot. No.** (See product label)

SPECIFICATION

| | |
|-------------------------|--|
| Product Overview | CPNE1 MS Standard C13 and N15-labeled recombinant protein (NP_690905) with a C-terminal MYC/DDK tag, was expressed in HEK293 cells. |
| Species | Human |
| Source | HEK293 |
| Description | Calcium-dependent membrane-binding proteins may regulate molecular events at the interface of the cell membrane and cytoplasm. This gene encodes a calcium-dependent protein that also contains two N-terminal type II C2 domains and an integrin A domain-like sequence in the C-terminus. However, the encoded protein does not contain a predicted signal sequence or transmembrane domains. This protein has a broad tissue distribution and it may function in membrane trafficking. This gene and the gene for RNA binding motif protein 12 overlap at map location 20q11.21. Alternate splicing results in multiple transcript variants encoding different proteins. [provided by RefSeq, Aug 2008] |
| Molecular Mass | 58.9 kDa |
| AA Sequence | MAHCVTLVQLSISCDHLIDKDIGSKSDPLCVLLQDVGGGSWAELGRTERVRNCSSPE FSKTLQLEYRFETVQKLRFGIYDIDNKTPELRDDDFLGGAECSLGQIVSSQVLTPLM LKPGKPAGRGTITVSAQELKDNRVVTMEVEARNLDDKDFLGKSDPFLEFFRQGDGK WHLVYRSEVIKNNLNPTWKRFSVPVQHFCGGNPSTPIQVQCSDYDSGDGSHDLIGTF |

 Tel: 1-631-559-9269 1-516-512-3133

 Email: info@creative-biomart.com  Fax: 1-631-938-8127

 45-1 Ramsey Road, Shirley, NY 11967, USA

HTSLAQLQAVPAEFECIHPEKQQKKKSYKNSGTIRVKICRVETEYSFLDYVMGGCQI
 NFTVGVDFTGSNGDPSSPDSLHYLSPTGVNEYLMALWSVGSVVQDYDSDKLFPAF
 GFQAQVPPDWQVSHEFALNFNPSNPYCAGIQGIVDAYRQALPQVRLYGPTNFAPIIN
 HVARFAAQAAHQGTASQYFMLLLLTGAVTDVEATREAVVRASNLPM SVIIVGVGGA
 DFEAMEQLDADGGPLHTRSGQAAARDIVQFVPYRRFQ NAPREALAQTVLAEVPTQL
 VSYFRAQGWAPLKLPPSAKDPAQAPQATRTRPLEQKLISEEDLAANDILDYKDDDD
 KV

Purity > 80% as determined by SDS-PAGE and Coomassie blue staining

Stability Stable for 3 months from receipt of products under proper storage and handling conditions.

Storage Store at -80 centigrade. Avoid repeated freeze-thaw cycles.

Concentration 50 µg/mL as determined by BCA

Storage Buffer 100 mM glycine, 25 mM Tris-HCl, pH 7.3.

GENE INFORMATION

Gene Name CPNE1 copine I [Homo sapiens (human)]

Official Symbol CPNE1

Synonyms CPNE1; copine I; copine-1; CPN1; COPN1; MGC1142;

Gene ID 8904

mRNA Refseq NM_152928

 Tel: 1-631-559-9269 1-516-512-3133

 Email: info@creative-biomart.com  Fax: 1-631-938-8127

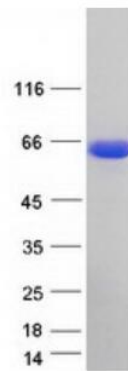
 45-1 Ramsey Road, Shirley, NY 11967, USA

Protein Refseq NP_690905

MIM 604205

UniProt ID Q99829

SDS-PAGE



 Tel: 1-631-559-9269 1-516-512-3133

 Email: info@creative-biomart.com  Fax: 1-631-938-8127

 45-1 Ramsey Road, Shirley, NY 11967, USA