

Recombinant Human CPNE5 Protein, GST-tagged

Cat. No. CPNE5-1800H Lot. No. (See product label)

SPECIFICATION

Product Overview	Human CPNE5 full-length ORF (AAH53872.1, 1 a.a. - 301 a.a.) recombinant protein with GST-tag at N-terminal.
Species	Human
Source	Wheat Germ
Description	<p>Calcium-dependent membrane-binding proteins may regulate molecular events at the interface of the cell membrane and cytoplasm. This gene is one of several genes that encode a calcium-dependent protein containing two N-terminal type II C2 domains and an integrin A domain-like sequence in the C-terminus. Several alternatively spliced transcript variants encoding different isoforms have been found for this gene. More variants may exist, but their full-length natures could not be determined. [provided by RefSeq, Sep 2015]</p>
Molecular Mass	59 kDa
AA Sequence	<p>MKKKKYVNSGTVTLLSFAVESECTFLDYIKGGTQINFTVAIDFTASNGNPSQSTSLHY MSPYQLNAYALALTAVGEIIQHYDSDKMFALGFGAKLPPDGRVSHEFPLNGNQEN PSCCGIDGILEAYHRSLRTVQLYGPTNFAPVVTHVARNAAAVQDGSQYSVLLIITDGV ISDMAQTKEAIVNAAKLPMSIIIVGVGQAEFDAMVELDGGDVRISRRGKLAERDIVQFV PFRDYVDRTGNHVLSMARLARDVLAIEIPDQLVSYMKAQGIRPRPPPAAPTHSPSQS PARTPPASPLHTHI</p>
Applications	Enzyme-linked Immunoabsorbent Assay

 Tel: 1-631-559-9269 1-516-512-3133

 Email: info@creative-biomart.com  Fax: 1-631-938-8127

 45-1 Ramsey Road, Shirley, NY 11967, USA

Western Blot (Recombinant protein)
 Antibody Production
 Protein Array

Notes	Best use within three months from the date of receipt of this protein.
Storage	Store at -80 centigrade. Aliquot to avoid repeated freezing and thawing.
Storage Buffer	50 mM Tris-HCl, 10 mM reduced Glutathione, pH=8.0 in the elution buffer.

GENE INFORMATION

Gene Name	CPNE5 copine V [Homo sapiens]
Official Symbol	CPNE5
Synonyms	CPNE5; copine V; COPN5; CPN5; KIAA1599;
Gene ID	57699
mRNA Refseq	NM_001314017
Protein Refseq	NP_001300946
MIM	604209
UniProt ID	Q9HCH3

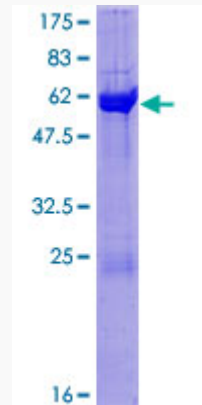
 Tel: 1-631-559-9269 1-516-512-3133

 Email: info@creative-biomart.com  Fax: 1-631-938-8127

 45-1 Ramsey Road, Shirley, NY 11967, USA

Quality Control

Testing:



12.5% SDS-PAGE Stained with Coomassie Blue.

 Tel: 1-631-559-9269 1-516-512-3133

 Email: info@creative-biomart.com  Fax: 1-631-938-8127

 45-1 Ramsey Road, Shirley, NY 11967, USA