

Recombinant Full Length Human CPNE6 Protein, C-Flag-tagged

Cat. No. CPNE6-1721HFL **Lot. No.** (See product label)

SPECIFICATION

Product Overview	Recombinant Full Length Human CPNE6 Protein, fused to Flag-tag at C-terminus, was expressed in Mammalian cells.
Species	Human
Source	Mammalian Cells
Description	This gene encodes a member of the copine family. Members of this family are calcium-dependent, phospholipid-binding proteins with C2 domains, two calcium- and phospholipid-binding domains. Through their domain structure and lipid binding capabilities, these proteins may play a role in membrane trafficking. This protein is thought to be brain-specific and has a domain structure of two N-terminal C2 domains and one von Willebrand factor A domain. It may have a role in synaptic plasticity.
Form	25 mM Tris HCl, pH 7.3, 100 mM glycine, 10% glycerol.
Molecular Mass	61.8 kDa
AA Sequence	MSDPEMGWVPEPQTMTLGASRVELRVSCHGLLDRDTLTKPHPCVLLKLYSDEQWV EVERTEVLRSCSSPV FSRVLALEYFFEEKQPVQFHVFDAEDGATSPRNDTFLGSTE CTLGQIVSQTKVTKPLLLKNGKTAGKSTI TIVAAEEVSGTNDYVQLTFRAYKLDNKDLF SKSDPFMEIYKTNEDQSDQLVWRTEVVKNNLNPSWEPFRLS LHSLCSCDVHRPLK FLVYDYDSSGKHDFIGFEFTSTFQEMQEGTANPGQEMQWDCINPKYRDKKKKNYKSS G TVVLAQCTVEKVHTFLDYIMGGCQISFTVAIDFTASNGDPRSSQSLHCLSPRQPNH

 Tel: 1-631-559-9269 1-516-512-3133

 Email: info@creative-biomart.com  Fax: 1-631-938-8127

 45-1 Ramsey Road, Shirley, NY 11967, USA

YLQALRAVGGICQD YSDKRFPAGFGGARIPPNFEVSHDFAINFDPENPECEEISGVI
 ASYRRCLPQIQLYGPTNVAPIINRVA EPAQREQSTGQATKYSVLLVLTGVDVSDMAE
 TRTAIVRASRLPMSIIIVGVGNADFSDMRLLDGDDGPLR CPRGVPAARDIVQFVPPFR
 DFKDAAPSALAKCVLAEVPRQVVEYYASQGISPGAPRPCTLATTSPSPTRTRPLEQ
 KLISEEDLAANDILDYKDDDDKV

Purity > 80% as determined by SDS-PAGE and Coomassie blue staining.

Stability Stable for 12 months from the date of receipt of the product under proper storage and handling conditions. Avoid repeated freeze-thaw cycles.

Storage Store at -80 centigrade.

Concentration >50 ug/mL as determined by microplate BCA method.

Preparation Recombinant protein was captured through anti-DDK affinity column followed by conventional chromatography steps.

Full Length Full L.

GENE INFORMATION

Gene Name CPNE6 copine 6 [Homo sapiens (human)]

Official Symbol CPNE6

Synonyms N-COPINE

Gene ID 9362

mRNA Refseq NM_006032.4

 Tel: 1-631-559-9269 1-516-512-3133

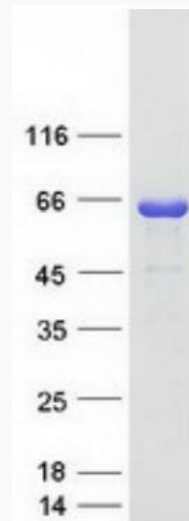
 Email: info@creative-biomart.com  Fax: 1-631-938-8127

 45-1 Ramsey Road, Shirley, NY 11967, USA

Protein Refseq NP_006023.1

MIM 605688

UniProt ID O95741



Coomassie blue staining of purified CPNE6 protein.

 Tel: 1-631-559-9269 1-516-512-3133

 Email: info@creative-biomart.com  Fax: 1-631-938-8127

 45-1 Ramsey Road, Shirley, NY 11967, USA