

# Recombinant Human CPNE6 Protein, Myc/DDK-tagged, C13 and N15-labeled

**Cat. No.** CPNE6-707H    **Lot. No.** (See product label)

## SPECIFICATION

### Product Overview

CPNE6 MS Standard C13 and N15-labeled recombinant protein (NP\_006023) with a C-terminal MYC/DDK tag, was expressed in HEK293 cells.

### Species

Human

### Source

HEK293

### Description

This gene encodes a member of the copine family. Members of this family are calcium-dependent, phospholipid-binding proteins with C2 domains, two calcium- and phospholipid-binding domains. Through their domain structure and lipid binding capabilities, these proteins may play a role in membrane trafficking. This protein is thought to be brain-specific and has a domain structure of two N-terminal C2 domains and one von Willebrand factor A domain. It may have a role in synaptic plasticity.

### Molecular Mass

62 kDa

### AA Sequence

MSDPEMGWVPEPQTMTLGASRVELRVSCHGLLDRDTLTKPHPCVLLKLYSDEQWV  
 EVERTEVLRSCSSPVFSRVLALAYFFEEKQPVFHFVDAEDGATSPRNDTFLGSTE  
 CTLGQIVSQTKVTKPLLLKNGKTAGKSTITIVAAEEVSGTNDYVQLTFRAYKLDNKDLF  
 SKSDPFMEIYKTNEDQSDQLVWRTEVVKNNLNPSWEPFRLSLHSLCSCDVHRPLKF  
 LVYDYDSSGKHDFIGFETSTFQEMQEGTANPGQEMQWDCINPKYRDKKKNYKSSG  
 TVVLAQCTVEKVHTFLDYIMGGCQISFTVAIDFTASNGDPRSSQSLHCLSPRQPNHY  
 LQALRAVGGICQDYDSDKRFPAGFGARIPPNFVSHDFAINFDPENPECEEISGVIA

 Tel: 1-631-559-9269    1-516-512-3133

 Email: [info@creative-biomart.com](mailto:info@creative-biomart.com)     Fax: 1-631-938-8127

 45-1 Ramsey Road, Shirley, NY 11967, USA

SYRRCLPQIQLYGPTNVAPIINRVAEPAQREQSTGQATKYSVLLVLTGQVSDMAET  
 RTAIVRASRLPMSIIIVGVGNADFSDMRLLDGDDGPLRCPRGVPAARDIVQFVPRDF  
 KDAAPSALAKCVLAEVPRQVVEYYASQGISPGAPRPCTLATTPSPSPTRTRPLEQKLI  
 SEEDLAANDILDYKDDDDKV

**Purity** > 80% as determined by SDS-PAGE and Coomassie blue staining

**Stability** Stable for 3 months from receipt of products under proper storage and handling conditions.

**Storage** Store at -80 centigrade. Avoid repeated freeze-thaw cycles.

**Concentration** 50 µg/mL as determined by BCA

**Storage Buffer** 100 mM glycine, 25 mM Tris-HCl, pH 7.3.

## GENE INFORMATION

**Gene Name** CPNE6 copine 6 [ Homo sapiens (human) ]

**Official Symbol** CPNE6

**Synonyms** CPNE6; copine VI (neuronal); copine-6; neuronal copine; neuronal-copine; N-COPINE;

**Gene ID** 9362

**mRNA Refseq** NM\_006032

**Protein Refseq** NP\_006023

 Tel: 1-631-559-9269 1-516-512-3133

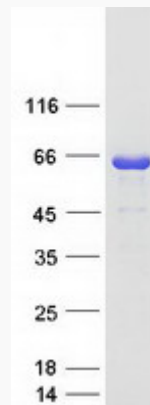
 Email: [info@creative-biomart.com](mailto:info@creative-biomart.com)  Fax: 1-631-938-8127

 45-1 Ramsey Road, Shirley, NY 11967, USA

**MIM** 605688

**UniProt ID** O95741

**SDS-PAGE**



 Tel: 1-631-559-9269 1-516-512-3133

 Email: [info@creative-biomart.com](mailto:info@creative-biomart.com)  Fax: 1-631-938-8127

 45-1 Ramsey Road, Shirley, NY 11967, USA