

Recombinant Human CPPED1 Protein (Gly7-Lys229), N-His tagged

Cat. No. CPPED1-2157H Lot. No. (See product label)

SPECIFICATION

Product Overview	Recombinant human CPPED1 (Gly7-Lys229) fused with N-His tag was expressed in E. coli.
Species	Human
Source	E.coli
ProteinLength	Gly7-Lys229
Form	Lyophilized powder/frozen liquid
Molecular Mass	27.83 kDa
Purity	>90% as determined by SDS-PAGE
Notes	For research use only.
Storage	Use a manual defrost freezer and avoid repeated freeze thaw cycles. Store at 2 to 8 centigrade for one week. Store at -20 to -80 centigrade for twelve months from the date of receipt.
Storage Buffer	0.01M PBS, pH 7.4, 0.02% NLS
Reconstitution	Reconstitute in sterile water for a stock solution.

 Tel: 1-631-559-9269 1-516-512-3133

 Email: info@creative-biomart.com  Fax: 1-631-938-8127

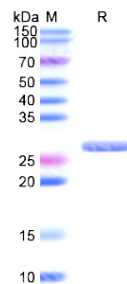
 45-1 Ramsey Road, Shirley, NY 11967, USA

Shipping

They are shipped out with dry ice/blue ice unless customers require otherwise.

GENE INFORMATION

Gene Name	CPPED1 calcineurin-like phosphoesterase domain containing 1 [Homo sapiens (human)]
Official Symbol	CPPED1
Synonyms	CPPED1; calcineurin-like phosphoesterase domain containing 1; calcineurin-like phosphoesterase domain-containing protein 1; complete S transactivated protein 1; CSTP1; FLJ11151; complete S-transactivated protein 1;
Gene ID	55313
mRNA Refseq	NM_001099455
Protein Refseq	NP_001092925
MIM	615603
UniProt ID	Q9BRF8

SDS-PAGE


 Tel: 1-631-559-9269 1-516-512-3133

 Email: info@creative-biomart.com  Fax: 1-631-938-8127

 45-1 Ramsey Road, Shirley, NY 11967, USA