

Recombinant Human CPPED1 Protein, GST-tagged

Cat. No. CPPED1-4233H Lot. No. (See product label)

SPECIFICATION

Product Overview	Human FLJ11151 full-length ORF (AAH06289.1, 1 a.a. - 314 a.a.) recombinant protein with GST-tag at N-terminal.
Species	Human
Source	Wheat Germ
Description	CPPED1 (Calcineurin Like Phosphoesterase Domain Containing 1) is a Protein Coding gene. Among its related pathways are Innate Immune System. GO annotations related to this gene include hydrolase activity and phosphoprotein phosphatase activity.
Molecular Mass	62 kDa
AA Sequence	MSAAEAGGVFHRARGRTLDAFPAEKESEWKGPFYFILGADPQFGLIKAWSTGDCDN GGDEWEQEIRLTEQAVQAINKLNPKPKFFVLCGDLIHAMPGKPWRTEQTEDLKRVL RAVDRAIPLVLVSGNHDIGNTPTAETVEEFCRTWGDDYFSFWVGGVFLVLNSQFY ENPSKCPSLKQAQDQWLDEQLSIARQRHCQHAIVFQHIPLFLESIDEDDDYYFNLSK STRKKLADKFIHAGVRVVFSGHYHRNAGGTYQNLDMVSSAIGCQLGRDPHGLRRVV VVTAEKIVHRYYSLELSEKGIEDDLMDLIKKK
Applications	Enzyme-linked Immunoabsorbent Assay Western Blot (Recombinant protein) Antibody Production Protein Array

 Tel: 1-631-559-9269 1-516-512-3133

 Email: info@creative-biomart.com  Fax: 1-631-938-8127

 45-1 Ramsey Road, Shirley, NY 11967, USA

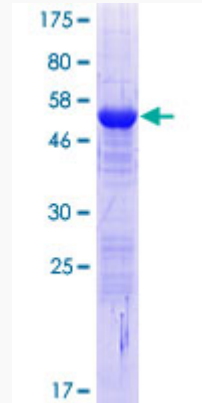
Notes	Best use within three months from the date of receipt of this protein.
Storage	Store at -80 centigrade. Aliquot to avoid repeated freezing and thawing.
Storage Buffer	50 mM Tris-HCl, 10 mM reduced Glutathione, pH=8.0 in the elution buffer.
GENE INFORMATION	
Gene Name	CPPED1 calcineurin like phosphoesterase domain containing 1 [Homo sapiens (human)]
Official Symbol	CPPED1
Synonyms	CPPED1; calcineurin like phosphoesterase domain containing 1; CSTP1; serine/threonine-protein phosphatase CPPED1; calcineurin-like phosphoesterase domain-containing protein 1; complete S-transactivated protein 1; EC 3.1.3.16; Calcineurin Like Phosphoesterase Domain Containing 1; Calcineurin-Like Phosphoesterase Domain-Containing Protein 1; Complete S-Transactivated Protein 1; CSTP1; Calcineurin-Like Phosphoesterase Domain Containing 1; Serine/Threonine-Protein Phosphatase CPPED1; Complete S Transactivated Protein 1
Gene ID	55313
mRNA Refseq	NM_001099455
Protein Refseq	NP_001092925
MIM	615603
UniProt ID	Q9BRF8

 Tel: 1-631-559-9269 1-516-512-3133

 Email: info@creative-biomart.com  Fax: 1-631-938-8127

 45-1 Ramsey Road, Shirley, NY 11967, USA

**Quality Control
Testing**



12.5% SDS-PAGE Stained with Coomassie Blue.

 Tel: 1-631-559-9269 1-516-512-3133

 Email: info@creative-biomart.com  Fax: 1-631-938-8127

 45-1 Ramsey Road, Shirley, NY 11967, USA