

Recombinant Human CPPED1 protein, His-tagged

Cat. No. CPPED1-6998H Lot. No. (See product label)

SPECIFICATION

Product Overview	Recombinant Human CPPED1 protein(Q9BRF8)(329aa), fused with N-terminal His tag, was expressed in E. coli.
Species	Human
Source	E.coli
Protein Length	329aa(including fusion tag)
Tag	N-His
Form	20mM Tris.Cl, 100mM NaCl, 0.4M Urea, 50% Glycerol, pH8.0.
Molecular Mass	37.5kDa(including fusion tag)
Storage	Store at -80°C and avoid repeated freeze-thaw cycles.
Reconstitution	It is recommended that sterile water be added to the vial to prepare a stock solution of 0.2 ug/ul. Centrifuge the vial at 4°C before opening to recover the entire contents.

GENE INFORMATION

Gene Name	CPPED1 calcineurin-like phosphoesterase domain containing 1 [Homo sapiens]
Official Symbol	CPPED1

 Tel: 1-631-559-9269 1-516-512-3133

 Email: info@creative-biomart.com  Fax: 1-631-938-8127

 45-1 Ramsey Road, Shirley, NY 11967, USA

Synonyms CPPED1; calcineurin-like phosphoesterase domain containing 1; calcineurin-like phosphoesterase domain-containing protein 1; complete S transactivated protein 1; CSTP1; FLJ11151; complete S-transactivated protein 1;

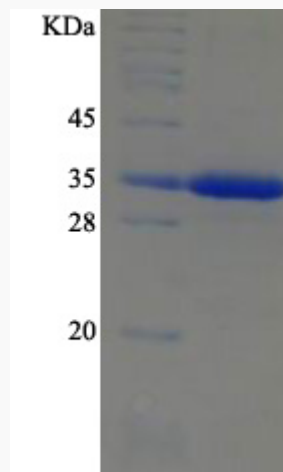
Gene ID [55313](#)

mRNA Refseq [NM_001099455](#)

Protein Refseq [NP_001092925](#)

UniProt ID [Q9BRF8](#)

SDS-PAGE



 Tel: 1-631-559-9269 1-516-512-3133

 Email: info@creative-biomart.com  Fax: 1-631-938-8127

 45-1 Ramsey Road, Shirley, NY 11967, USA