

# Recombinant Full Length Human CPQ Protein, C-Flag-tagged

Cat. No. CPQ-1422HFL Lot. No. (See product label)

## SPECIFICATION

**Product Overview** Recombinant Full Length Human CPQ Protein, fused to Flag-tag at C-terminus, was expressed in Mammalian cells.

**Species** Human

**Source** Mammalian Cells

**Description** This gene encodes a metallopeptidase that belongs to the peptidase M28 family. The encoded protein may catalyze the cleavage of dipeptides with unsubstituted terminals into amino acids.

**Form** 25 mM Tris HCl, pH 7.3, 100 mM glycine, 10% glycerol.

**Molecular Mass** 51.7 kDa

**AA Sequence**

```
MKFLIFAFFGGVHLLSLCSGKAICKNGISKRTFEEIKEEIASCGDVAKAIINLAVYGKAQ
NRSYERLALL VDTVGPRLSGSKNLEKAIQIMYQNLQQDGLEKVHLEPVRIPHWERG
EESAVMLEPRIHKIAILGLGSSIG TPPEGITAEVLVVTSFDELQRRASEARGKIVVYNQ
PYINYSRTVQYRTQGAVEAAKVGALASLIRSVASF SIYSPHTGIQEYQDGVPKIPTAC
ITVEDAEMMSRMASHGIKIVIQLKMGAKTYPDTSFNTVAEITGSKY PEQVVLVSGH
LDSWDVGGGAMDDGGGAFISWEALSLIKDLGLRPKRTLRLVLWTAEEQGGVGAFAQ
YYQLH KVNISNYSLVMESDAGTFLPTGLQFTGSEKARAIMEEVMSLLQPLNITQVLS
HGEQTDINFWIQAGVPGA
SLLDDLYKYFFFHSHGDTMTVMDPKQMNVAADVAVVSYVVADMEEMLPRSTR
RPLEQKLISEEDLAANDILDYKDDDDKV
```

Tel: 1-631-559-9269 1-516-512-3133

Email: [info@creative-biomart.com](mailto:info@creative-biomart.com) Fax: 1-631-938-8127

45-1 Ramsey Road, Shirley, NY 11967, USA

<b>Purity</b>	> 80% as determined by SDS-PAGE and Coomassie blue staining.
<b>Stability</b>	Stable for 12 months from the date of receipt of the product under proper storage and handling conditions. Avoid repeated freeze-thaw cycles.
<b>Storage</b>	Store at -80 centigrade.
<b>Concentration</b>	>50 ug/mL as determined by microplate BCA method.
<b>Preparation</b>	Recombinant protein was captured through anti-DDK affinity column followed by conventional chromatography steps.
<b>Protein Families</b>	Protease
<b>Full Length</b>	Full L.

## GENE INFORMATION

<b>Gene Name</b>	CPQ carboxypeptidase Q [ Homo sapiens (human) ]
<b>Official Symbol</b>	CPQ
<b>Synonyms</b>	LDP; PGCP
<b>Gene ID</b>	10404
<b>mRNA Refseq</b>	NM_016134.4
<b>Protein Refseq</b>	NP_057218.1
<b>MIM</b>	618754

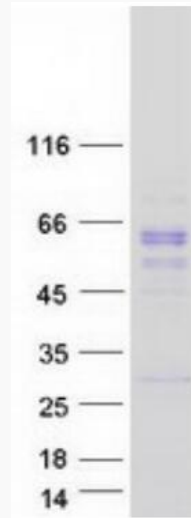
 Tel: 1-631-559-9269 1-516-512-3133

 Email: [info@creative-biomart.com](mailto:info@creative-biomart.com)  Fax: 1-631-938-8127

 45-1 Ramsey Road, Shirley, NY 11967, USA

UniProt ID

Q9Y646



Coomassie blue staining of purified CPQ protein.

 Tel: 1-631-559-9269 1-516-512-3133

 Email: [info@creative-biomart.com](mailto:info@creative-biomart.com)  Fax: 1-631-938-8127

 45-1 Ramsey Road, Shirley, NY 11967, USA