

Recombinant Human CPQ Protein, Myc/DDK-tagged, C13 and N15-labeled

Cat. No. CPQ-4342H **Lot. No.** (See product label)

SPECIFICATION

Product Overview	PGCP MS Standard C13 and N15-labeled recombinant protein (NP_057218) with a C-terminal MYC/DDK tag, was expressed in HEK293 cells.
Species	Human
Source	HEK293
Description	This gene encodes a metallopeptidase that belongs to the peptidase M28 family. The encoded protein may catalyze the cleavage of dipeptides with unsubstituted terminals into amino acids.
Molecular Mass	51.9 kDa
AA Sequence	<p>MKFLIAFFGGVHLLSLCSGKAICKNGISKRTFEEIKEEIASCGDVAKAIINLAVYGKAQ NRSYERLALLVDTVGPRLSGSKNLEKAIQIMYQNLQQDGLEKVHLEPVRIPHWERGE ESAVMLEPRIHKIAILGLGSSIGTPPEGITAEVLVTSFDELQRRASEARGKIVVYNQP YINYSRTVQYRTQGAVEAAKVGALASLIRSVASFISIYSPHTGIQEYQDGVPKIPTACIT VEDAEMMSRMASHGIKIVIQKMGAKTYPDTSFNVAEITGSKYPEQVVLVSGHLD SWDVGQGAMDDGGGAFISWEALSLIKDLGLRPKRTLRLVLWTAEEQGGVGAFQYY QLHKVNISNYSLVMESDAGTFLPTGLQFTGSEKARAIMEEVMSLLQPLNITQVLSHG EGTDINFWIQAGVPGASLLDDLYKYFFFHSHGDTMTVMDPKQMNVAADVAVVVS YVVADMEEMLPRSTRTRPLEQKLISEEDLAANDILDYKDDDDKV</p>
Purity	> 80% as determined by SDS-PAGE and Coomassie blue staining

 Tel: 1-631-559-9269 1-516-512-3133

 Email: info@creative-biomart.com  Fax: 1-631-938-8127

 45-1 Ramsey Road, Shirley, NY 11967, USA

Stability	Stable for 3 months from receipt of products under proper storage and handling conditions.
Storage	Store at -80 centigrade. Avoid repeated freeze-thaw cycles.
Concentration	50 µg/mL as determined by BCA
Storage Buffer	100 mM glycine, 25 mM Tris-HCl, pH 7.3.

GENE INFORMATION

Gene Name	CPQ carboxypeptidase Q [Homo sapiens (human)]
Official Symbol	CPQ
Synonyms	CPQ; carboxypeptidase Q; LDP; PGCP; carboxypeptidase Q; Ser-Met dipeptidase; aminopeptidase; blood plasma glutamate carboxypeptidase; lysosomal dipeptidase; EC 3.4.17.-
Gene ID	10404
mRNA Refseq	NM_016134
Protein Refseq	NP_057218
MIM	618754
UniProt ID	Q9Y646

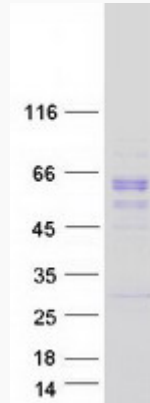
 Tel: 1-631-559-9269 1-516-512-3133

 Email: info@creative-biomart.com  Fax: 1-631-938-8127

 45-1 Ramsey Road, Shirley, NY 11967, USA



SDS-PAGE



Tel: 1-631-559-9269 1-516-512-3133

Email: info@creative-biomart.com Fax: 1-631-938-8127

45-1 Ramsey Road, Shirley, NY 11967, USA