

## Recombinant Human CPS1 Protein, GST-tagged

**Cat. No.** CPS1-1809H    **Lot. No.** (See product label)

### SPECIFICATION

<b>Product Overview</b>	Human CPS1 partial ORF ( NP_001866, 1400 a.a. - 1500 a.a.) recombinant protein with GST-tag at N-terminal.
<b>Species</b>	Human
<b>Source</b>	Wheat Germ
<b>Description</b>	The mitochondrial enzyme encoded by this gene catalyzes synthesis of carbamoyl phosphate from ammonia and bicarbonate. This reaction is the first committed step of the urea cycle, which is important in the removal of excess urea from cells. The encoded protein may also represent a core mitochondrial nucleoid protein. Three transcript variants encoding different isoforms have been found for this gene. The shortest isoform may not be localized to the mitochondrion. Mutations in this gene have been associated with carbamoyl phosphate synthetase deficiency, susceptibility to persistent pulmonary hypertension, and susceptibility to venoocclusive disease after bone marrow transplantation.[provided by RefSeq, May 2010]
<b>Molecular Mass</b>	36.85 kDa
<b>AA Sequence</b>	ANNVPATPVAWPSQEGQNPSLSSIRKLIRDGSIDLVINLPNNNTKFDVHDNYVIRRTAV DSGIPLLTNPFQVTKLFAEAVQKSRKVDKSLFHYRQYSAGKAA
<b>Applications</b>	Enzyme-linked Immunoabsorbent Assay Western Blot (Recombinant protein) Antibody Production

 Tel: 1-631-559-9269    1-516-512-3133

 Email: [info@creative-biomart.com](mailto:info@creative-biomart.com)     Fax: 1-631-938-8127

 45-1 Ramsey Road, Shirley, NY 11967, USA

**Protein Array**

<b>Notes</b>	Best use within three months from the date of receipt of this protein.
<b>Storage</b>	Store at -80 centigrade. Aliquot to avoid repeated freezing and thawing.
<b>Storage Buffer</b>	50 mM Tris-HCl, 10 mM reduced Glutathione, pH=8.0 in the elution buffer.

**GENE INFORMATION**

<b>Gene Name</b>	CPS1 carbamoyl-phosphate synthase 1, mitochondrial [ Homo sapiens ]
<b>Official Symbol</b>	CPS1
<b>Synonyms</b>	CPS1; carbamoyl-phosphate synthase 1, mitochondrial; carbamoyl phosphate synthetase 1, mitochondrial; carbamoyl-phosphate synthase [ammonia], mitochondrial; carbamoylphosphate synthetase I; CPSASE1;
<b>Gene ID</b>	1373
<b>mRNA Refseq</b>	NM_001122633
<b>Protein Refseq</b>	NP_001116105
<b>MIM</b>	608307
<b>UniProt ID</b>	P31327

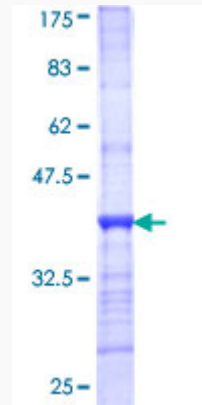
 Tel: 1-631-559-9269 1-516-512-3133

 Email: [info@creative-biomart.com](mailto:info@creative-biomart.com)  Fax: 1-631-938-8127

 45-1 Ramsey Road, Shirley, NY 11967, USA

**Quality Control**

**Testing:**



12.5% SDS-PAGE Stained with Coomassie Blue.

 Tel: 1-631-559-9269 1-516-512-3133

 Email: [info@creative-biomart.com](mailto:info@creative-biomart.com)  Fax: 1-631-938-8127

 45-1 Ramsey Road, Shirley, NY 11967, USA