

Recombinant Human CPSF4 Protein, GST-tagged

Cat. No. CPSF4-1815H Lot. No. (See product label)

SPECIFICATION

| | |
|-------------------------|---|
| Product Overview | Human CPSF4 full-length ORF (AAH03101, 1 a.a. - 244 a.a.) recombinant protein with GST-tag at N-terminal. |
| Species | Human |
| Source | Wheat Germ |
| Description | <p>Inhibition of the nuclear export of poly(A)-containing mRNAs caused by the influenza A virus NS1 protein requires its effector domain. The NS1 effector domain functionally interacts with the cellular 30 kDa subunit of cleavage and polyadenylation specific factor 4, an essential component of the 3' end processing machinery of cellular pre-mRNAs. In influenza virus-infected cells, the NS1 protein is physically associated with cleavage and polyadenylation specific factor 4, 30kD subunit. Binding of the NS1 protein to the 30 kDa protein in vitro prevents CPSF binding to the RNA substrate and inhibits 3' end cleavage and polyadenylation of host pre-mRNAs. Thus the NS1 protein selectively inhibits the nuclear export of cellular, and not viral, mRNAs. Multiple alternatively spliced transcript variants that encode different isoforms have been described for this gene. [provided by RefSeq, Jul 2008]</p> |
| Molecular Mass | 52.58 kDa |
| AA Sequence | <p>MQEIIASVDHIKFDLEIAVEQQLGAQPLPFPMDKSGAAVCEFFLKAACGKGGMCPF RHISGEKTVVCKHWLRGLCKKGDQCEFLHEYDMTKMPECYFYSKFGECSNKECPF LHIDPESKIKDCPWYDRGFCKHGPLCRHRHTRRVICVNYLVGFCPEGPSCKFMHPR</p> |

 Tel: 1-631-559-9269 1-516-512-3133

 Email: info@creative-biomart.com  Fax: 1-631-938-8127

 45-1 Ramsey Road, Shirley, NY 11967, USA

FELPMGTTEQPPLPQQTQPPAKQRTPQVIGVMQSQNSSAGNRGPRPLEQVTCYKC
GEKGHYANRCTKGHLAFLSGQ

Applications
Enzyme-linked Immunoabsorbent Assay
Western Blot (Recombinant protein)
Antibody Production
Protein Array

Notes Best use within three months from the date of receipt of this protein.

Storage Store at -80 centigrade. Aliquot to avoid repeated freezing and thawing.

Storage Buffer 50 mM Tris-HCl, 10 mM reduced Glutathione, pH=8.0 in the elution buffer.

GENE INFORMATION

Gene Name [CPSF4 cleavage and polyadenylation specific factor 4, 30kDa \[Homo sapiens \]](#)

Official Symbol [CPSF4](#)

Synonyms CPSF4; cleavage and polyadenylation specific factor 4, 30kDa; cleavage and polyadenylation specific factor 4, 30kD subunit; cleavage and polyadenylation specificity factor subunit 4; CPSF30; NAR; neb-1; no arches homolog; CPSF 30 kDa subunit; no arches-like zinc finger protein; NS1 effector domain-binding protein 1; cleavage-polyadenylation specificity factor, 30kD; cleavage and polyadenylation specificity factor 30 kDa subunit; NEB1;

Gene ID [10898](#)

mRNA Refseq [NM_001081559](#)

 Tel: 1-631-559-9269 1-516-512-3133

 Email: info@creative-biomart.com  Fax: 1-631-938-8127

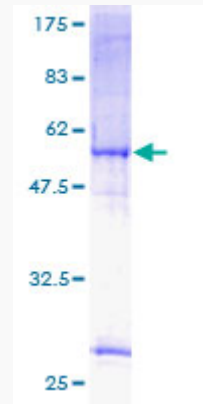
 45-1 Ramsey Road, Shirley, NY 11967, USA

Protein Refseq NP_001075028

MIM 603052

UniProt ID O95639

**Quality Control
Testing:**



12.5% SDS-PAGE Stained with Coomassie Blue.

 Tel: 1-631-559-9269 1-516-512-3133

 Email: info@creative-biomart.com  Fax: 1-631-938-8127

 45-1 Ramsey Road, Shirley, NY 11967, USA