

Recombinant Human CPT1A protein, His-tagged

Cat. No. CPT1A-1185H Lot. No. (See product label)

SPECIFICATION

Product Overview	Recombinant Human CPT1A protein(NP_001027017.1)(Arg191~Leu353) was expressed in E. coli with a N-terminal His Tag.
Species	Human
Source	E.coli
ProteinLength	Arg191~Leu353
Description	The mitochondrial oxidation of long-chain fatty acids is initiated by the sequential action of carnitine palmitoyltransferase I (which is located in the outer membrane and is detergent-labile) and carnitine palmitoyltransferase II (which is located in the inner membrane and is detergent-stable), together with a carnitine-acylcarnitine translocase. CPT I is the key enzyme in the carnitine-dependent transport across the mitochondrial inner membrane and its deficiency results in a decreased rate of fatty acid beta-oxidation. Alternatively spliced transcript variants encoding different isoforms have been found for this gene.
Form	Supplied as lyophilized form in PBS, pH7.4, containing 5% sucrose.
Molecular Mass	The protein has a predicted molecular mass of 21.0kDa.
AA Sequence	MGHHHHHSGSEFRPLMKEEDFKRMTALAQDFAVGLGPRLQWYLKLSWWATNY VSDWWEEYIYLRGRGPLMVNSNYAMDLLYILPTHIQAARAGNAIHAILLYRRKLDRE EIKPIRLLGSTIPLCSAQWERMFNSTRIPGEETDTIQHMRDSKHIVVYHRGRYFKVWL

 Tel: 1-631-559-9269 1-516-512-3133

 Email: info@creative-biomart.com  Fax: 1-631-938-8127

 45-1 Ramsey Road, Shirley, NY 11967, USA

	YHDGRL
Endotoxin	<1.0 EU per 1µg (determined by the LAL method).
Purity	>95%, 23kDa as determined by SDS-PAGE reducing conditions.
Applications	SDS-PAGE; WB; ELISA; IP. (May be suitable for use in other assays to be determined by the end user.)
Stability	The thermal stability is described by the loss rate. The loss rate was determined by accelerated thermal degradation test, that is, incubate the protein at 37°C for 48h, and no obvious degradation and precipitation were observed. The loss rate is less than 5% within the expiration date under appropriate storage condition.
Storage	Avoid repeated freeze/thaw cycles. Store at 2-8°C for one month. Aliquot and store at -80°C for 12 months.
Reconstitution	Reconstitute in sterile PBS, pH7.2-pH7.4.

GENE INFORMATION

Gene Name	CPT1A carnitine palmitoyltransferase 1A [Homo sapiens (human)]
Official Symbol	CPT1A
Synonyms	CPT1A, CPT1
Gene ID	1374
mRNA Refseq	NM_001031847.3

 Tel: 1-631-559-9269 1-516-512-3133

 Email: info@creative-biomart.com  Fax: 1-631-938-8127

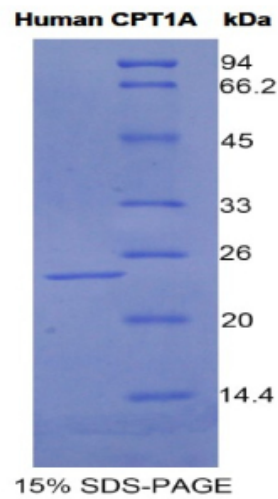
 45-1 Ramsey Road, Shirley, NY 11967, USA

Protein Refseq NP_001027017.1

MIM 600528

UniProt ID P50416

**SDS-PAGE of
CPT1A-1185H**



 Tel: 1-631-559-9269 1-516-512-3133

 Email: info@creative-biomart.com  Fax: 1-631-938-8127

 45-1 Ramsey Road, Shirley, NY 11967, USA