

## Recombinant Human CPT1A Protein, GST-tagged

Cat. No. CPT1A-1817H Lot. No. (See product label)

### SPECIFICATION

<b>Product Overview</b>	Human CPT1A full-length ORF ( NP_001867.2, 1 a.a. - 773 a.a.) recombinant protein with GST-tag at N-terminal.
<b>Species</b>	Human
<b>Source</b>	Wheat Germ
<b>Description</b>	The mitochondrial oxidation of long-chain fatty acids is initiated by the sequential action of carnitine palmitoyltransferase I (which is located in the outer membrane and is detergent-labile) and carnitine palmitoyltransferase II (which is located in the inner membrane and is detergent-stable), together with a carnitine-acylcarnitine translocase. CPT I is the key enzyme in the carnitine-dependent transport across the mitochondrial inner membrane and its deficiency results in a decreased rate of fatty acid beta-oxidation. Alternatively spliced transcript variants encoding different isoforms have been found for this gene. [provided by RefSeq, Jul 2008]
<b>Molecular Mass</b>	114.8 kDa
<b>AA Sequence</b>	MAEAHQAVAFQFTVTPDGIDLRLSHEALRQIYLSGLHSWKKKFIRFKNGIITGVYPAS PSSWLIVVVGVMTTMYAKIDPSLGIIAKINRTLETANCMSSQTKNVVSGVLFGTGLWV ALIVTMRYSLKVLVLSYHGWMFTEHGKMSRATKIWMGMVKIFSGRKPMLYSFQTSLP RLPVPVAVKDTVNRYLQSVRPLMKEEDFKRMTALAQDFAVGLGPRLQWYLKLSWW ATNYVSDWWEYIYLRGRGPLMVNSNYAMDLLYILPHTHIQAARAGNAIHAILLYRRK LDREEIKPIRLLGSTIPLCSAQWERMFNSTRIPGEETDTIQHMRDSKHIVVYHRGRYF

 Tel: 1-631-559-9269 1-516-512-3133

 Email: [info@creative-biomart.com](mailto:info@creative-biomart.com)  Fax: 1-631-938-8127

 45-1 Ramsey Road, Shirley, NY 11967, USA

KVWLYHDGRLLKPREMEQQMQRILDNTSEPQPGEARLAALTAGDRVWARCRQAY  
 FGRGKNKQSLDAVEKAAFFVTLDETEEGYRSEDPDTSMDSYAKSLLHGRCYDRWF  
 DKSFTFVVFKNKMGMLNAEHSWADAPIVAHLWEYVMSIDSLQLGYAEDGHCKGDIN  
 PNIPYPTRLQWDIPGECQEVIETSLNTANLLANDVDFHSFPFVAFGKGIKKCRTSPD  
 AFVQLALQLAHYKDMGKFCLTYEASMTRLFREGRTETVRSCTTESCDFVRAMVDPA  
 QTVEQRLKLFKLASEKHQHYRLAMTGGIDRHLFCLYVVSXYLAVESPFKEVLSE  
 PWRLSTSQTPQQQVELFDLENNPEYVSSGGGGFPGVADDGYGVSYILVGENLINFHIS  
 SKFSCPETDSHRFGRHLKEAMTDIITLFGSSNSKK

**Applications**

Enzyme-linked Immunoabsorbent Assay  
 Western Blot (Recombinant protein)  
 Antibody Production  
 Protein Array

**Notes**

Best use within three months from the date of receipt of this protein.

**Storage**

Store at -80 centigrade. Aliquot to avoid repeated freezing and thawing.

**Storage Buffer**

50 mM Tris-HCl, 10 mM reduced Glutathione, pH=8.0 in the elution buffer.

## GENE INFORMATION

**Gene Name**

CPT1A carnitine palmitoyltransferase 1A (liver) [ Homo sapiens ]

**Official Symbol**

CPT1A

**Synonyms**

CPT1A; carnitine palmitoyltransferase 1A (liver); CPT1; carnitine O-palmitoyltransferase 1, liver isoform; CPT1 L; L CPT1; CPT I; CPTI-L; carnitine palmitoyltransferase I, liver; carnitine O-palmitoyltransferase I, liver isoform; CPT1-L; L-CPT1;

 Tel: 1-631-559-9269 1-516-512-3133

 Email: [info@creative-biomart.com](mailto:info@creative-biomart.com)  Fax: 1-631-938-8127

 45-1 Ramsey Road, Shirley, NY 11967, USA

**Gene ID** 1374

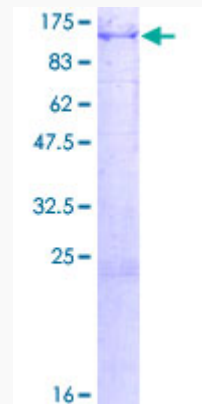
**mRNA Refseq** NM\_001031847

**Protein Refseq** NP\_001027017

**MIM** 600528

**UniProt ID** P50416

**Quality Control  
Testing:**



12.5% SDS-PAGE Stained with Coomassie Blue.

 Tel: 1-631-559-9269 1-516-512-3133

 Email: [info@creative-biomart.com](mailto:info@creative-biomart.com)  Fax: 1-631-938-8127

 45-1 Ramsey Road, Shirley, NY 11967, USA