

## Recombinant Human CPT1A protein, GST-tagged

Cat. No. CPT1A-5732H Lot. No. (See product label)

### SPECIFICATION

<b>Product Overview</b>	Recombinant Human CPT1A protein(406-756 aa), fused with N-terminal GST tag, was expressed in E. coli.
<b>Species</b>	Human
<b>Source</b>	E.coli
<b>ProteinLength</b>	406-756 aa
<b>Form</b>	The purified protein was Lyophilized from sterile PBS (58mM Na <sub>2</sub> HPO <sub>4</sub> , 17mM NaH <sub>2</sub> PO <sub>4</sub> , 68mM NaCl, pH7.4). 5 % trehalose and 5 % mannitol are added as protectant before lyophilization.
<b>Storage</b>	Short-term storage: Store at 2-8°C for (1-2 weeks). Long-term storage: Aliquot and store at -20°C to -80°C for up to 3 months, reconstitution with sterile water and addition of an equal volume of glycerol. Avoid repeat freeze-thaw cycles.
<b>AA Sequence</b>	<p>           QSLDAVEKAAFFVTLDETEEGYRSEDPDTSMDSYAKSLLHGRCYDRWFDKSFTFVV            FKNGKMGMLNAEHSWADAPIVAHLWEYVMSIDSLQLGYAEDGHCKGDINPNIPYPTR            LQWDIPGECQEVIETSLNTANLLANDVDFHSFPFVAFGKGIKKCRTSPDAFVQLALQ            LAHYKDMGKFCLTYEASMTRLFREGRTETVRSCTTTESCDFVRAMVDPAQTVEQRLK            LFKLASEKHQHMYRLAMTGSGIDRHLFCLYVVSKYLAVESPFLEVLSEPWRLSTSQ            TPQQQVELFDLENNPEYVSSGGGFVADDDGYGVSYILVGENLINFHISSKFSPET            GIISQGPSSDT         </p>

 Tel: 1-631-559-9269 1-516-512-3133

 Email: [info@creative-biomart.com](mailto:info@creative-biomart.com)  Fax: 1-631-938-8127

 45-1 Ramsey Road, Shirley, NY 11967, USA

**Purity** 90%, by SDS-PAGE with Coomassie Brilliant Blue staining.

## GENE INFORMATION

**Official Symbol** [CPT1A](#)

**Synonyms**

CPT1A; carnitine palmitoyltransferase 1A (liver); CPT1; carnitine O-palmitoyltransferase 1, liver isoform; CPT1 L; L CPT1; CPT I; CPTI-L; carnitine palmitoyltransferase I, liver; carnitine O-palmitoyltransferase I, liver isoform; CPT1-L; L-CPT1;

**Gene ID** [1374](#)

**mRNA Refseq** [NM\\_001031847](#)

**Protein Refseq** [NP\\_001027017](#)

**MIM** [600528](#)

**UniProt ID** [P50416](#)

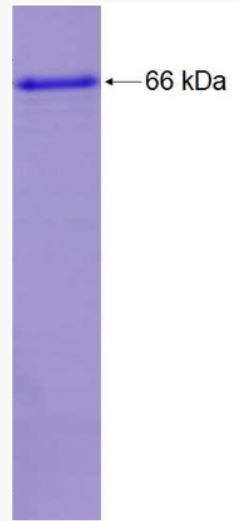
 Tel: 1-631-559-9269 1-516-512-3133

 Email: [info@creative-biomart.com](mailto:info@creative-biomart.com)  Fax: 1-631-938-8127

 45-1 Ramsey Road, Shirley, NY 11967, USA



SDS-PAGE



☎ Tel: 1-631-559-9269 1-516-512-3133

☎ Email: [info@creative-biomart.com](mailto:info@creative-biomart.com) ☎ Fax: 1-631-938-8127

☎ 45-1 Ramsey Road, Shirley, NY 11967, USA