

Recombinant Human CPT1C Protein, GST-tagged

Cat. No. CPT1C-1820H Lot. No. (See product label)

SPECIFICATION

| | |
|-------------------------|--|
| Product Overview | Human CPT1C full-length ORF (AAH29104.1, 1 a.a. - 792 a.a.) recombinant protein with GST-tag at N-terminal. |
| Species | Human |
| Source | Wheat Germ |
| Description | This gene encodes a member of the carnitine/choline acetyltransferase family. The encoded protein regulates the beta-oxidation and transport of long-chain fatty acids into mitochondria, and may play a role in the regulation of feeding behavior and whole-body energy homeostasis. Alternatively spliced transcript variants encoding multiple protein isoforms have been observed for this gene. [provided by RefSeq, Dec 2010] |
| Molecular Mass | 116.1 kDa |
| AA Sequence | MAEAHQAVGFRPSLTSDGAEVELSAPVLQEIYLSGLRSWKRHLRFWDFLTGVFP ASPLSWLFLFSAIQLAWFLQLDPSLGLMEKIKELLPDWGGQHHGLRGVLAALFASC LWGALIFTLHVALRLLLSYHGWLLEPHGAMSSPTKTWLALVRIFSGRHPMLFSYQRS LPRQPVPVSVQDTRKYLESVRPILSDEDFDWTAVLAQEFRLQASLLQWYLRKSW WASNYSVDWWEFVYLRSRNPLMVNSNYMMAARAGNAVHALLLYRHRLNRQEIP PTLLMGMRPLCSAQYEKIFNTTRIPGVQKDYIRHLHDSQHVAVFHRGRFFRMGTHS RNSLLSPRALEQQFQRILDDPSPACPHEEHLAALTAAPRGTWAQVVRTSLKTQAAEAL EAVEGAFFVSLDAEPAGLTREDPAASLDAYAHALLAGRGHDRWFDKSFTLIVFSNG |

 Tel: 1-631-559-9269 1-516-512-3133

 Email: info@creative-biomart.com  Fax: 1-631-938-8127

 45-1 Ramsey Road, Shirley, NY 11967, USA

KLGLSVEHSWADCPISGHMWEFTLATECFQLGYSTDGHCKGHPDPTLPQPQRLQW
 DLPDQIHSSISLALRGAKILSENV DCHVVPFSLFGKSFIRRHLS SDFSFIQIALQLAHFR
 DRGQFCLTYESAMTRLFLEGR TETVRSCTREACNFVRAMEDKEKTD PQCCLALFRVA
 VDKHQALLKAAMSGQG VDRHLFALYIVSRFLHLQSPFLTQVHSEQWQLSTS QIPVQ
 QMHLFDVHNYPDYVSSGGGFGPADDHGYGVSYIFMGDGMITFHISSKKSSTKTDSH
 RLGQHIEDALLDVASLFQAGQHFKRRFRGSGKENSRRHRCGFLSRQTGASKASMTS
 TDF

| | |
|---------------------|---|
| Applications | Enzyme-linked Immunoabsorbent Assay Western Blot (Recombinant protein) Antibody Production Protein Array |
|---------------------|---|

| | |
|--------------|--|
| Notes | Best use within three months from the date of receipt of this protein. |
|--------------|--|

| | |
|----------------|--|
| Storage | Store at -80 centigrade. Aliquot to avoid repeated freezing and thawing. |
|----------------|--|

| | |
|-----------------------|--|
| Storage Buffer | 50 mM Tris-HCl, 10 mM reduced Glutathione, pH=8.0 in the elution buffer. |
|-----------------------|--|

GENE INFORMATION

| | |
|------------------|--|
| Gene Name | CPT1C carnitine palmitoyltransferase 1C [Homo sapiens] |
|------------------|--|

| | |
|------------------------|-----------------------|
| Official Symbol | CPT1C |
|------------------------|-----------------------|

| | |
|-----------------|--|
| Synonyms | CPT1C; carnitine palmitoyltransferase 1C; carnitine O-palmitoyltransferase 1, brain isoform; CPT1P; CPTIC; FLJ23809; carnitine palmitoyltransferase I related C; carnitine O-palmitoyltransferase I, brain isoform; CATL1; CPT1-B; CPTI-B; |
|-----------------|--|

| | |
|----------------|------------------------|
| Gene ID | 126129 |
|----------------|------------------------|

 Tel: 1-631-559-9269 1-516-512-3133

 Email: info@creative-biomart.com  Fax: 1-631-938-8127

 45-1 Ramsey Road, Shirley, NY 11967, USA

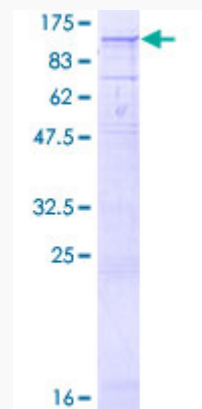
mRNA Refseq [NM_001136052](#)

Protein Refseq [NP_001129524](#)

MIM [608846](#)

UniProt ID [Q8TCG5](#)

**Quality Control
Testing:**



12.5% SDS-PAGE Stained with Coomassie Blue.

 Tel: 1-631-559-9269 1-516-512-3133

 Email: info@creative-biomart.com  Fax: 1-631-938-8127

 45-1 Ramsey Road, Shirley, NY 11967, USA