

# Recombinant Human CPT1C Protein, Myc/DDK-tagged, C13 and N15-labeled

Cat. No. CPT1C-5246H Lot. No. (See product label)

## SPECIFICATION

### Product Overview

CPT1C MS Standard C13 and N15-labeled recombinant protein (NP\_689572) with a C-terminal MYC/DDK tag, was expressed in HEK293 cells.

### Species

Human

### Source

HEK293

### Description

This gene encodes a member of the carnitine/choline acetyltransferase family. The encoded protein regulates the beta-oxidation and transport of long-chain fatty acids into mitochondria, and may play a role in the regulation of feeding behavior and whole-body energy homeostasis. Alternatively spliced transcript variants encoding multiple protein isoforms have been observed for this gene.

### Molecular Mass

90.8 kDa

### AA Sequence

MAEAHQAVGFRPSLTSDGAEVELSAPVLQEIYLSGLRSWKRHLSRFWNDFLTGVFP  
 ASPLSWLFLFSAIQLAWFLQLDPSLGLMEKIKELLPDWGGQHHGLRGVLAALFASC  
 LWGALIFTLHVALRLLLSYHGWLLEPHGAMSSPTKTWLALVRIFSGRHPMLFSYQRS  
 LPRQPVPSVQDTRKYLESVRPILSDEDFDWTAVLAQEFLRLQASLLQWYLRKSW  
 WASNYVSDWWEFVYLRSRNPLMVNSNYMMDFLYVTPTPLQAARAGNAVHALLL  
 YRHRLNRQEIPPTLLMGMRPLCSAQYEKIFNTRIPGVQKDYIRHLHDSQHVAVFHR  
 GRFFRMGTHSRNSLLSPRALEQQFQRILDDPSPACPHEEHLAALTAAPRGTWAQVR  
 TSLKTQAAEALAVEGAFFVSLDAEPAGLTREDPAASLDAYAHALLAGRGHDRWF

 Tel: 1-631-559-9269 1-516-512-3133

 Email: [info@creative-biomart.com](mailto:info@creative-biomart.com)  Fax: 1-631-938-8127

 45-1 Ramsey Road, Shirley, NY 11967, USA

DKSFTLIVFSNGKLGLSVEHSWADCPISGHMWEFTLATECFQLGYSTDGHCKGHPD  
 PTLPQPQRLQWDLDPDQIHSSISLALRGAKILSENVDCHEVVPFSLFGKSFIRRCCHLSSD  
 SFIQIALQLAHRDRGQFCLTYESAMTRLFLEGRTEVRSCTREACNFVRAMEDKEK  
 TDPQCLALFRVAVDKHQALLKAAMSGQGVDRHLFALYIVSRFLHLQSPFLTQVHSEQ  
 WQLSTSQIPVQQMHLFDVHNYPDYVSSGGGFGPADDHGYGVSYIFMGDGMITFHIS  
 SKKSSTKTDSHRLGQHIEDALLDVASLFQAGQHFRRFRGSGKENSRRHRCGFLSRQ  
 TGASKASMTSTDFTRTRPLEQKLISEEDLAANDILDYKDDDDKV

**Purity** > 80% as determined by SDS-PAGE and Coomassie blue staining

**Stability** Stable for 3 months from receipt of products under proper storage and handling conditions.

**Storage** Store at -80 centigrade. Avoid repeated freeze-thaw cycles.

**Concentration** 50 µg/mL as determined by BCA

**Storage Buffer** 100 mM glycine, 25 mM Tris-HCl, pH 7.3.

## GENE INFORMATION

**Gene Name** [CPT1C carnitine palmitoyltransferase 1C \[ Homo sapiens \(human\) \]](#)

**Official Symbol** [CPT1C](#)

**Synonyms** CPT1C; carnitine palmitoyltransferase 1C; carnitine O-palmitoyltransferase 1, brain isoform; CPT1P; CPTIC; FLJ23809; carnitine palmitoyltransferase I related C; carnitine O-palmitoyltransferase I, brain isoform; CATL1; CPT1-B; CPTI-B;

**Gene ID** [126129](#)

 Tel: 1-631-559-9269 1-516-512-3133

 Email: [info@creative-biomart.com](mailto:info@creative-biomart.com)  Fax: 1-631-938-8127

 45-1 Ramsey Road, Shirley, NY 11967, USA

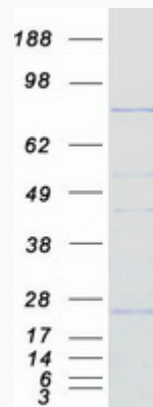
mRNA Refseq [NM\\_152359](#)

Protein Refseq [NP\\_689572](#)

MIM [608846](#)

UniProt ID [Q8TCG5](#)

SDS-PAGE



 Tel: 1-631-559-9269 1-516-512-3133

 Email: [info@creative-biomart.com](mailto:info@creative-biomart.com)  Fax: 1-631-938-8127

 45-1 Ramsey Road, Shirley, NY 11967, USA