

Recombinant Human CPT2 Protein, GST-tagged

Cat. No. CPT2-1821H **Lot. No.** (See product label)

SPECIFICATION

Product Overview	Human CPT2 full-length ORF (AAH02445.1, 1 a.a. - 658 a.a.) recombinant protein with GST-tag at N-terminal.
Species	Human
Source	Wheat Germ
Description	The protein encoded by this gene is a nuclear protein which is transported to the mitochondrial inner membrane. Together with carnitine palmitoyltransferase I, the encoded protein oxidizes long-chain fatty acids in the mitochondria. Defects in this gene are associated with mitochondrial long-chain fatty-acid (LCFA) oxidation disorders. [provided by RefSeq, Jul 2008]
Molecular Mass	100.2 kDa
AA Sequence	MVPRLLLRWPRGPAVGPAGPSRPLSAGSGPGQYLQRSIVPTMHYQDSLPRLPK LEDTIRRYLSAQKPLLNDGQFRKTEQFCKSFENGIGKELHEQLVALDKQNKHTSYILG PWFDMYLSARDSVVLNFPFMAFNPDPKSEYNDQLTRATNMTVSAIRFLKTLRAGL LEPEVFHLNPAKSDTITFKRLIRFVPSSLSWYGAYLVNAYPLDMSQYFRLFNSTRLPK PSRDELFTDDKARHLLVLRKGNFYIFDVLDDQGNIVSPSEIQAHLKYILSDSSPAPEFP LAYLTSENARDIWAELRQKLMSSGNEESLRKVDSAVFCLCLDDFPIKDLVHLSHMLH GDGTNRWFDKSFNLIKDGSTAIHFEHSWGDGVAVLRFFNEVFKDSTQTPAVTPQS QPATTDSTVTVQKLNFEITDALKTGITAAKEKFDATMKTLTIDCVQFQRRGGKEFLKKQ KLSPDAVAQLAFQMAFLRQYGQTVATYESCSTAFAFKHGRTEITIRPASVYTKRCSEAF

 Tel: 1-631-559-9269 1-516-512-3133

 Email: info@creative-biomart.com  Fax: 1-631-938-8127

 45-1 Ramsey Road, Shirley, NY 11967, USA

VREPSRHSAGELQQMMVECSKYHGQLTKEAAMGQGFDRHLFALRHLLAAAKGIILPE
 LYLDPAYGQINHNVLSTSTLSSPAVNLGGFAPVVSDGFGVGYAVHDNWIGCNVSSY
 PGRNAREFLQCVEKALEDVFDALLEGKSIKS

Applications	Enzyme-linked Immunoabsorbent Assay Western Blot (Recombinant protein) Antibody Production Protein Array
Notes	Best use within three months from the date of receipt of this protein.
Storage	Store at -80 centigrade. Aliquot to avoid repeated freezing and thawing.
Storage Buffer	50 mM Tris-HCl, 10 mM reduced Glutathione, pH=8.0 in the elution buffer.

GENE INFORMATION

Gene Name	CPT2 carnitine palmitoyltransferase 2 [Homo sapiens]
Official Symbol	CPT2
Synonyms	CPT2; carnitine palmitoyltransferase 2; carnitine palmitoyltransferase II , CPT1; carnitine O-palmitoyltransferase 2, mitochondrial; CPTASE; CPT II; carnitine palmitoyltransferase II; CPT1; IIAE4;
Gene ID	1376
mRNA Refseq	NM_000098
Protein Refseq	NP_000089

 Tel: 1-631-559-9269 1-516-512-3133

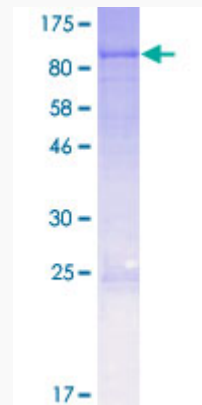
 Email: info@creative-biomart.com  Fax: 1-631-938-8127

 45-1 Ramsey Road, Shirley, NY 11967, USA

MIM 600650

UniProt ID P23786

**Quality Control
Testing:**



12.5% SDS-PAGE Stained with Coomassie Blue.

 Tel: 1-631-559-9269 1-516-512-3133

 Email: info@creative-biomart.com  Fax: 1-631-938-8127

 45-1 Ramsey Road, Shirley, NY 11967, USA