

# Recombinant Human CPT2 Protein, Myc/DDK-tagged, C13 and N15-labeled

**Cat. No.** CPT2-5788H    **Lot. No.** (See product label)

## SPECIFICATION

<b>Product Overview</b>	CPT2 MS Standard C13 and N15-labeled recombinant protein (NP_000089) with a C-terminal MYC/DDK tag, was expressed in HEK293 cells.
<b>Species</b>	Human
<b>Source</b>	HEK293
<b>Description</b>	The protein encoded by this gene is a nuclear protein which is transported to the mitochondrial inner membrane. Together with carnitine palmitoyltransferase I, the encoded protein oxidizes long-chain fatty acids in the mitochondria. Defects in this gene are associated with mitochondrial long-chain fatty-acid (LCFA) oxidation disorders.
<b>Molecular Mass</b>	73.8 kDa
<b>AA Sequence</b>	MVPRLLLRWPRGPAVGPAPSRLSAGSGPGQYLQRSIVPTMHYQDSLPRLP LEDTIRRYLSAQKPLLNDGQFRKTEQFCKSFENGIGKELHEQLVALDKQNKHTSYILG PWFDMYLSARDSVVLNFPFMAFNPDPKSEYNDQLTRATNMTVSAIRFLKTLRAGL LEPEVFHLNPAKSDTITFKRLIRFVPSSLSWYGAYLVNAYPLDMSQYFRLFNSTRLPK PSRDELFTDDKARHLLVLRKGNFYIFDVLDDQGNIVSPSEIQAHLLKYILSDSSPAPEFP LAYLTSENARDIWAELRQKLMSSGNEESLRKVDSAVFCLCLDDFPIKDLVHLSHMLH GDGTNRWFDKSFNLIKDGSTAIHFEHSWGDGVAVLRFFNEVFKDSTQTPAVTPQS QPATTDSTVTVQKLNFEITDALKTGITAAKEKFDATMKTLTIDCVQFQRRGGKEFLKKQ

 Tel: 1-631-559-9269    1-516-512-3133

 Email: [info@creative-biomart.com](mailto:info@creative-biomart.com)     Fax: 1-631-938-8127

 45-1 Ramsey Road, Shirley, NY 11967, USA

KLSPDAVAQLAFQMAFLRQYGQTVATYESCSTAAFKHGRTE TIRPASVYTKRCSEAF  
 VREPSRHSAGELQQMMVECSKYHGQLTKEAAMGQGFDRHLFALRH LAAAKGIILPE  
 LYLDPAYGQINHNVLSTLSSPAVNLGGFAPVSDGFGVGYAVHDN WIGCNVSSY  
 PGRNAREFLQCVEKALEDVFDALLEGKSIKSTRTRPLEQKLISEED LAANDILDYKDDD  
 DKV

**Purity** > 80% as determined by SDS-PAGE and Coomassie blue staining

**Stability** Stable for 3 months from receipt of products under proper storage and handling conditions.

**Storage** Store at -80 centigrade. Avoid repeated freeze-thaw cycles.

**Concentration** 50 µg/mL as determined by BCA

**Storage Buffer** 100 mM glycine, 25 mM Tris-HCl, pH 7.3.

## GENE INFORMATION

**Gene Name** CPT2 carnitine palmitoyltransferase 2 [ Homo sapiens (human) ]

**Official Symbol** CPT2

**Synonyms** CPT2; carnitine palmitoyltransferase 2; carnitine palmitoyltransferase II, CPT1; carnitine O-palmitoyltransferase 2, mitochondrial; CPTASE; CPT II; carnitine palmitoyltransferase II; CPT1; IIAE4;

**Gene ID** 1376

**mRNA Refseq** NM\_000098

 Tel: 1-631-559-9269 1-516-512-3133

 Email: [info@creative-biomart.com](mailto:info@creative-biomart.com)  Fax: 1-631-938-8127

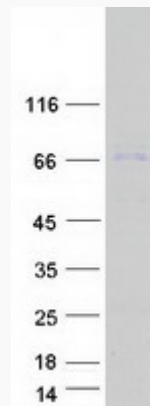
 45-1 Ramsey Road, Shirley, NY 11967, USA

**Protein Refseq**      [NP\\_000089](#)

**MIM**                      [600650](#)

**UniProt ID**             [P23786](#)

**SDS-PAGE**



 Tel: 1-631-559-9269    1-516-512-3133

 Email: [info@creative-biomart.com](mailto:info@creative-biomart.com)     Fax: 1-631-938-8127

 45-1 Ramsey Road, Shirley, NY 11967, USA