

Recombinant Human CPT2 Protein, His/GST-tagged

Cat. No. CPT2-652H **Lot. No.** (See product label)

SPECIFICATION

Product Overview	Recombinant Human CPT2(Ala152~Ser658) fused with His/GST tag at N-terminal was expressed in E. coli.
Species	Human
Source	E.coli
ProteinLength	Ala152~Ser658
Description	The protein encoded by this gene is a nuclear protein which is transported to the mitochondrial inner membrane. Together with carnitine palmitoyltransferase I, the encoded protein oxidizes long-chain fatty acids in the mitochondria. Defects in this gene are associated with mitochondrial long-chain fatty-acid (LCFA) oxidation disorders.
Form	PBS, pH7.4, containing 0.01% SKL, 1mM DTT, 5% Trehalose and Proclin300.
Molecular Mass	86.6kDa
Endotoxin	<1.0EU per 1ug (determined by the LAL method)
Purity	> 90%
Applications	Positive Control; Immunogen; SDS-PAGE; WB. If bio-activity of the protein is needed, please check active protein

 Tel: 1-631-559-9269 1-516-512-3133

 Email: info@creative-biomart.com  Fax: 1-631-938-8127

 45-1 Ramsey Road, Shirley, NY 11967, USA

Stability	The thermal stability is described by the loss rate. The loss rate was determined by accelerated thermal degradation test, that is, incubate the protein at 37 centigrade for 48h, and no obvious degradation and precipitation were observed. The loss rate is less than 5% within the expiration date under appropriate storage condition.
Storage	Avoid repeated freeze/thaw cycles. Store at 2-8 centigrade for one month. Aliquot and store at -80 centigrade for 12 months.
Reconstitution	Reconstitute in PBS or others

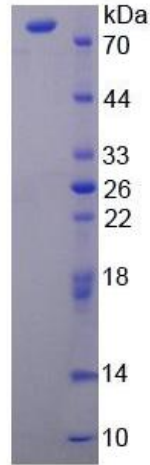
GENE INFORMATION

Gene Name	CPT2 carnitine palmitoyltransferase 2 [Homo sapiens]
Official Symbol	CPT2
Synonyms	CPT2; carnitine palmitoyltransferase 2; carnitine palmitoyltransferase II , CPT1; carnitine O-palmitoyltransferase 2, mitochondrial; CPTASE; CPT II; carnitine palmitoyltransferase II; CPT1; IIAE4;
Gene ID	1376
mRNA Refseq	NM_000098
Protein Refseq	NP_000089
MIM	600650
UniProt ID	P23786

 Tel: 1-631-559-9269 1-516-512-3133

 Email: info@creative-biomart.com  Fax: 1-631-938-8127

 45-1 Ramsey Road, Shirley, NY 11967, USA



15% SDS-PAGE

 Tel: 1-631-559-9269 1-516-512-3133

 Email: info@creative-biomart.com  Fax: 1-631-938-8127

 45-1 Ramsey Road, Shirley, NY 11967, USA