

Recombinant Human CPVL Protein (23-476 aa), His-SUMO-tagged

Cat. No. CPVL-1137H **Lot. No.** (See product label)

SPECIFICATION

Product Overview Recombinant Human CPVL Protein (23-476 aa) is produced by E. coli expression system. This protein is fused with a 6xHis-SUMO tag at the N-terminal. Research Area: Cell Biology. Protein Description: Full Length of Mature Protein.

Species Human

Source E.coli

ProteinLength 23-476 aa

Description May be involved in the digestion of phagocytosed particles in the lysosome, participation in an inflammatory protease cascade, and trimming of peptides for antigen presentation.


Form Tris-based buffer, 50% glycerol

Molecular Mass 67.9 kDa

AA Sequence LFRSLYRSVSMPPKGDSGQPLFLTPYIEAGKIQKGRELSLVGPFPGGLNMKSYAGFLT
VNKTYNSNLFFWFFPAQIQPEDAPVVLWLQGGPGGSSMFGLFVEHGPYVVTSNMT
LRDRDFPWTTTLTMLYIDNPVGTGFSFTDDTHGYAVNEDDVARLDLYSALIQQFFQIFP
EYKNDFYVTGESYAGKYVPAIAHLIHLNPNVREVKINLNGIAIGDGYSDPESIIGGYA
EFLYQIGLLDEKQKKYFQKQCHECIEHIRKQNWFEAFEILDKLLDGDLTSDPSYFQNV
TGCSNYYNFLRCTEPEDQLYYVKFLSLPEVRQAIHVGNQTFNDGTIVEKYLRREDTVQ

 Tel: 1-631-559-9269 1-516-512-3133

 Email: info@creative-biomart.com  Fax: 1-631-938-8127

 45-1 Ramsey Road, Shirley, NY 11967, USA

SVKPWLTEIMNNYKVLIIYNGQLDIIVAAALTERSLMGMDWKGSQEYKKAEEKVWKIF
KSDSEVAGYIRQAGDFHQVIIRGGGHILPYDQPLRAFDMINRFIYGKGWDPYVG

Purity > 90% as determined by SDS-PAGE.

Notes Repeated freezing and thawing is not recommended. Store working aliquots at 4 centigrade for up to one week.

Storage The shelf life is related to many factors, storage state, buffer ingredients, storage temperature and the stability of the protein itself. Generally, the shelf life of liquid form is 6 months at -20 centigrade/-80 centigrade. The shelf life of lyophilized form is 12 months at -20 centigrade/-80 centigrade.

Concentration A hardcopy of COA with concentration instruction is sent along with the products.

GENE INFORMATION

Gene Name CPVL carboxypeptidase, vitellogenic-like [Homo sapiens]

Official Symbol CPVL

Synonyms CPVL; VCP-like protein; HVLP; MGC10029;

Gene ID 54504

mRNA Refseq NM_019029

Protein Refseq NP_061902

MIM 609780

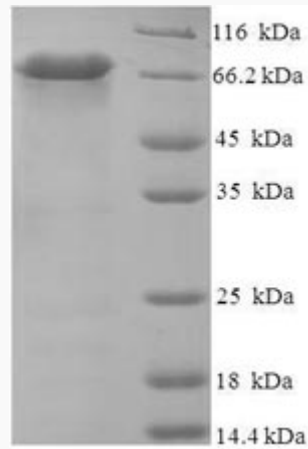
 Tel: 1-631-559-9269 1-516-512-3133

 Email: info@creative-biomart.com  Fax: 1-631-938-8127

 45-1 Ramsey Road, Shirley, NY 11967, USA

UniProt ID

Q9H3G5



(Tris-Glycine gel) Discontinuous SDS-PAGE (reduced) with 5% enrichment gel and 15% separation gel.

 Tel: 1-631-559-9269 1-516-512-3133

 Email: info@creative-biomart.com  Fax: 1-631-938-8127

 45-1 Ramsey Road, Shirley, NY 11967, USA