

Recombinant Human CPVL Protein, GST-tagged

Cat. No. CPVL-1823H **Lot. No.** (See product label)

SPECIFICATION

Product Overview Human CPVL full-length ORF (AAH16838.1, 1 a.a. - 476 a.a.) recombinant protein with GST-tag at N-terminal.

Species Human

Source Wheat Germ

Description The protein encoded by this gene is a carboxypeptidase and bears strong sequence similarity to serine carboxypeptidases. Carboxypeptidases are a large class of proteases that act to cleave a single amino acid from the carboxy termini of proteins or peptides. The exact function of this protein, however, has not been determined. [provided by RefSeq, Jan 2017]

Molecular Mass 77.88 kDa

AA Sequence

```
MVGAMWKVIVSLVLLMPGPCDGLFRSLYRSVSMPPKGDGQPLFLTPYIEAGKIQK
GRELSLVGPFPGLNMKSYAGFLTVNKTYNSNLFFWFFPAQIQPEDAPVVLWLQGGP
GGSSMFGLFVEHGPYVVTSNMTLRDRDFPWTTTLSMLYIDNPVGTGFSFTDDTHGY
AVNEDDVARDLYSALIQQFFQIFPEYKNNDFYVTGESYAGKYVPAIAHLIHS LN PVREV
KINLNGIAIGDGYSDPESIIGGYAEFLYQIGLLDEKQKKYFQKQCHECIEHIRKQNWFE
AFEILDKLLDGDLTSDPSYFQNV TGCSNYN FLRCTEPEDQLYYVKFLSLPEVRQAIH
VGNQTFNDGTIVEKYLREDTVQSVKPWLTEIMNNYKVL IYNGQLDIIVAAALTE RSLM
GMDWKGSQEYKKA EKKVWKIFKSDSEVAGYIRQV GDFHQVIIRGGGHILPYDQPLR
AFDMINRFIYGKGWDPYVG
```

 Tel: 1-631-559-9269 1-516-512-3133

 Email: info@creative-biomart.com  Fax: 1-631-938-8127

 45-1 Ramsey Road, Shirley, NY 11967, USA



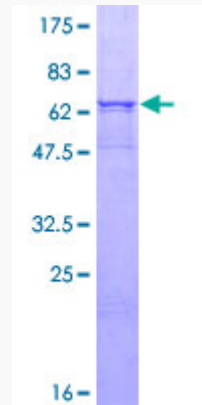
Applications	Enzyme-linked Immunoabsorbent Assay Western Blot (Recombinant protein) Antibody Production Protein Array
Notes	Best use within three months from the date of receipt of this protein.
Storage	Store at -80 centigrade. Aliquot to avoid repeated freezing and thawing.
Storage Buffer	50 mM Tris-HCl, 10 mM reduced Glutathione, pH=8.0 in the elution buffer.

GENE INFORMATION

Gene Name	CPVL carboxypeptidase, vitellogenic-like [Homo sapiens]
Official Symbol	CPVL
Synonyms	CPVL; carboxypeptidase, vitellogenic-like; probable serine carboxypeptidase CPVL; carboxypeptidase WUG; CP Mac carboxypeptidase; vitellogenic carboxypeptidase like protein; VCP-like protein; CP-Mac carboxypeptidase; vitellogenic carboxypeptidase-like protein; HVLP; MGC10029;
Gene ID	54504
mRNA Refseq	NM_019029
Protein Refseq	NP_061902
MIM	609780
UniProt ID	Q9H3G5

Quality Control

Testing:



12.5% SDS-PAGE Stained with Coomassie Blue.

 Tel: 1-631-559-9269 1-516-512-3133

 Email: info@creative-biomart.com  Fax: 1-631-938-8127

 45-1 Ramsey Road, Shirley, NY 11967, USA