

Recombinant Human CPVL Protein (Leu23-Gly476), C-His tagged

Cat. No. CPVL-2143H Lot. No. (See product label)

SPECIFICATION

Product Overview	Recombinant human CPVL (Leu23-Gly476) fused with C-terminal His tag was expressed in Mammalian cells.
Species	Human
Source	Mammalian Cells
ProteinLength	Leu23-Gly476
Form	Lyophilized powder/frozen liquid
Molecular Mass	47.08 kDa
Purity	>90% as determined by SDS-PAGE
Notes	For research use only.
Storage	Use a manual defrost freezer and avoid repeated freeze thaw cycles. Store at 2 to 8 centigrade for one week. Store at -20 to -80 centigrade for twelve months from the date of receipt.
Storage Buffer	Supplied as solution form in PBS or lyophilized from PBS.
Reconstitution	Reconstitute in sterile water for a stock solution.

 Tel: 1-631-559-9269 1-516-512-3133

 Email: info@creative-biomart.com  Fax: 1-631-938-8127

 45-1 Ramsey Road, Shirley, NY 11967, USA

Shipping They are shipped out with dry ice/blue ice unless customers require otherwise.

GENE INFORMATION

Gene Name CPVL carboxypeptidase, vitellogenic-like [Homo sapiens (human)]

Official Symbol CPVL

Synonyms CPVL; carboxypeptidase, vitellogenic-like; probable serine carboxypeptidase CPVL; carboxypeptidase WUG; CP Mac carboxypeptidase; vitellogenic carboxypeptidase like protein; VCP-like protein; CP-Mac carboxypeptidase; vitellogenic carboxypeptidase-like protein; HVLP; MGC10029;

Gene ID 54504

mRNA Refseq NM_019029

Protein Refseq NP_061902

MIM 609780

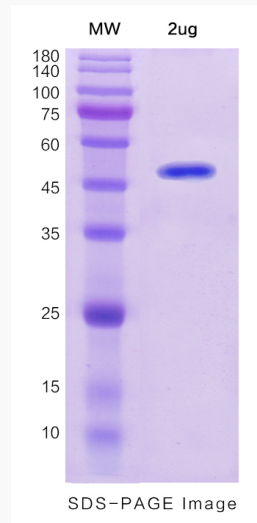
UniProt ID Q9H3G5

 Tel: 1-631-559-9269 1-516-512-3133

 Email: info@creative-biomart.com  Fax: 1-631-938-8127

 45-1 Ramsey Road, Shirley, NY 11967, USA

SDS-PAGE



 Tel: 1-631-559-9269 1-516-512-3133

 Email: info@creative-biomart.com  Fax: 1-631-938-8127

 45-1 Ramsey Road, Shirley, NY 11967, USA