

## Recombinant Human CPVL protein, His-tagged

**Cat. No.** CPVL-4633H    **Lot. No.** (See product label)

### SPECIFICATION

<b>Product Overview</b>	Recombinant Human CPVL protein(127-476 aa), fused with N-terminal His tag, was expressed in E.coli.
<b>Species</b>	Human
<b>Source</b>	E.coli
<b>ProteinLength</b>	127-476 aa
<b>Form</b>	The purified protein was lyophilized from sterile phosphate-buffered saline (PBS: 58 mM Na <sub>2</sub> HPO <sub>4</sub> , 17 mM NaH <sub>2</sub> PO <sub>4</sub> , 68 mM NaCl, pH 7.4). Prior to lyophilization, 5% (w/v) trehalose and 5% (w/v) mannitol were incorporated as cryoprotective excipients. The protein was eluted with a buffer containing 300 mM imidazole.
<b>AASequence</b>	YVVTSNMTRLRDRDFPWTTTLSMLYIDNPVGTGFSFTDDTHGYAVNEDDVARDLYSA LIQFFQIFPEYKNNDFYVTGESYAGKYVPAIAHLIHLNPNVREVKINLNGIAIGDGYSDP ESIIGGYAEFLYQIGLLDEKQKKYFQKQCHECIEHIRKQNWFEAFEILDKLLDGDLTSD PSYFQNVGTGCSNYNFLRCTEPEDQLYVVKFSLPEVRQAIHVGNQTFNDGTIVEKY LREDTVQSVKPWLTEIMNNYKVLINQGLDIIVAAALTERSLMGMDWKGSQEYKKA KKVWKIFKSDSEVAGYIRQVGFHQVIRGGGHILPYDQPLRAFDMINRFIYGKGWDP YVG
<b>Purity</b>	85%, by SDS-PAGE with Coomassie Brilliant Blue staining.
<b>Storage</b>	Store at 2-8°C for 1-2 weeks. Aliquot and store at -20°C to -80°C for up to 3 months,

 Tel: 1-631-559-9269    1-516-512-3133

 Email: [info@creative-biomart.com](mailto:info@creative-biomart.com)     Fax: 1-631-938-8127

 45-1 Ramsey Road, Shirley, NY 11967, USA

reconstitution with sterile water and addition of an equal volume of glycerol. Avoid repeat freeze-thaw cycles.

**Reconstitution**

Dissolve the product in 200 µl sterile water to achieve a working concentration of 0.25 g/µl. If experimental compatibility allows, mix the aqueous solution with an equal volume of glycerol (1:1 ratio) after initial reconstitution.

## GENE INFORMATION

**Gene Name** CPVL carboxypeptidase, vitellogenic-like [ Homo sapiens ]

**Official Symbol** CPVL

**Synonyms**

CPVL; carboxypeptidase, vitellogenic-like; probable serine carboxypeptidase CPVL; carboxypeptidase WUG; CP Mac carboxypeptidase; vitellogenic carboxypeptidase like protein; VCP-like protein; CP-Mac carboxypeptidase; vitellogenic carboxypeptidase-like protein; HVLP; MGC10029;

**Gene ID** 54504

**mRNA Refseq** NM\_019029

**Protein Refseq** NP\_061902

**MIM** 609780

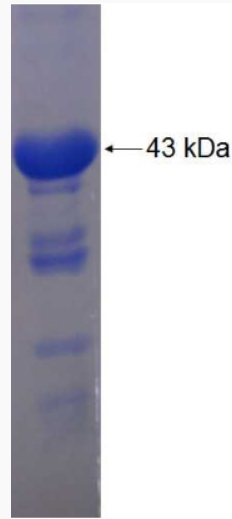
**UniProt ID** Q9H3G5

 Tel: 1-631-559-9269 1-516-512-3133

 Email: [info@creative-biomart.com](mailto:info@creative-biomart.com)  Fax: 1-631-938-8127

 45-1 Ramsey Road, Shirley, NY 11967, USA

**SDS-PAGE**



 Tel: 1-631-559-9269 1-516-512-3133

 Email: [info@creative-biomart.com](mailto:info@creative-biomart.com)  Fax: 1-631-938-8127

 45-1 Ramsey Road, Shirley, NY 11967, USA