

# Recombinant Human CPXM1 Protein, Myc/DDK-tagged, C13 and N15-labeled

Cat. No. CPXM1-1052H Lot. No. (See product label)

## SPECIFICATION

### Product Overview

CPXM1 MS Standard C13 and N15-labeled recombinant protein (NP\_062555) with a C-terminal MYC/DDK tag, was expressed in HEK293 cells.

### Species

Human

### Source

HEK293

### Description

This gene likely encodes a member of the carboxypeptidase family of proteins. Cloning of a comparable locus in mouse indicates that the encoded protein contains a discoidin domain and a carboxypeptidase domain, but the protein appears to lack residues necessary for carboxypeptidase activity.

### Molecular Mass

81.7 kDa

### AA Sequence

MWGLLLALAAFAPAVGPALGAPRNSVLGLAQPGTTKVPGLTPALHSSPAQPPAETA  
 NGTSEQHVIRIRVIKKKKVIMKKRKKLTLTRPTPLVTAGPLVTPTPAGTLDPAEKQETG  
 CPPLGLESLRVSDSRLEASSSQSFGLGPHRGRLNIQSGLEDGDLYDGAWCAEEQD  
 ADPWFQVDAGHPTRFSGVITQGRNSVWRYDWWVTSYKVQFSNDSRTWWGSRNHS  
 SGMDAVFPANSDPETPVLNLLPEPQVARFIRLLPQTLWLGGAAPCLRAEILACPVSDP  
 NDLFLEAPASGSSDPLDFQHHNYKAMRKLKQVQECPNITRIYSIGKSYQGLKLYV  
 MEMSDKPGEHELGEPEVRYVAGMHGNEALGRELLLLLMQFLCHEFLRGNPRVTRL  
 LSEMRIHLLPSMNPDGYEIAYHRGSELVWAEGRWNNQSIDLNHNFADLNTPLWEA  
 QDDGKVPHIVPNHHLPLPTYYTLPNATVAPETRAVIKWMKRIPFVLSANLHGGELVV

 Tel: 1-631-559-9269 1-516-512-3133

 Email: [info@creative-biomart.com](mailto:info@creative-biomart.com)  Fax: 1-631-938-8127

 45-1 Ramsey Road, Shirley, NY 11967, USA

SYPFDMTRTPWAARELTPTPDDAVFRWLSTVYAGSNLAMQDTSRRPCHSQDFSVH  
 GNIINGADWHTVPGSMNDFSYLHTNCFEVTVELSCDKFPHENELPQEWENNKDALL  
 TYLEQVRMGIAGVVRDKDELGIADAVIAVDGINHDVTTAWGGDYWRLTPGDYMV  
 TASAEGYHSVTRNCRVTFEEGPFPCNFVLTKTPKQRLRELLAAGAKVPPDLRRRLE  
 RLRGQKDTRTRPLEQKLISEEDLAANDILDYKDDDDKV

**Purity** > 80% as determined by SDS-PAGE and Coomassie blue staining

**Stability** Stable for 3 months from receipt of products under proper storage and handling conditions.

**Storage** Store at -80 centigrade. Avoid repeated freeze-thaw cycles.

**Concentration** 50 µg/mL as determined by BCA

**Storage Buffer** 100 mM glycine, 25 mM Tris-HCl, pH 7.3.

## GENE INFORMATION

**Gene Name** CPXM1 carboxypeptidase X, M14 family member 1 [ Homo sapiens (human) ]

**Official Symbol** CPXM1

**Synonyms** CPXM1; carboxypeptidase X (M14 family), member 1; carboxypeptidase X (M14 family), CPXM; probable carboxypeptidase X1; carboxypeptidase like protein X1; CPX 1; CPX1; metallo-carboxypeptidase CPX-1; carboxypeptidase-like protein X1; CPXM;

**Gene ID** 56265

**mRNA Refseq** NM\_019609

 Tel: 1-631-559-9269 1-516-512-3133

 Email: [info@creative-biomart.com](mailto:info@creative-biomart.com)  Fax: 1-631-938-8127

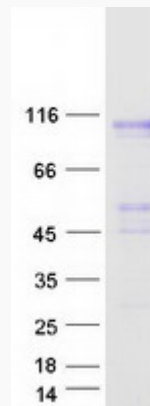
 45-1 Ramsey Road, Shirley, NY 11967, USA

**Protein Refseq** NP\_062555

**MIM** 609555

**UniProt ID** Q96SM3

**SDS-PAGE**



 Tel: 1-631-559-9269 1-516-512-3133

 Email: [info@creative-biomart.com](mailto:info@creative-biomart.com)  Fax: 1-631-938-8127

 45-1 Ramsey Road, Shirley, NY 11967, USA